



**STAIRCARE PROGRIT**  
ANTI SLIP FOR INDUSTRIES

STAIRCARE-PROGRIT PRESENTS

# DRAINAGE GRATING

Composite Drainage Grating



Tailor Made Safety Solutions for Industries since 2004

## INTRODUCTION

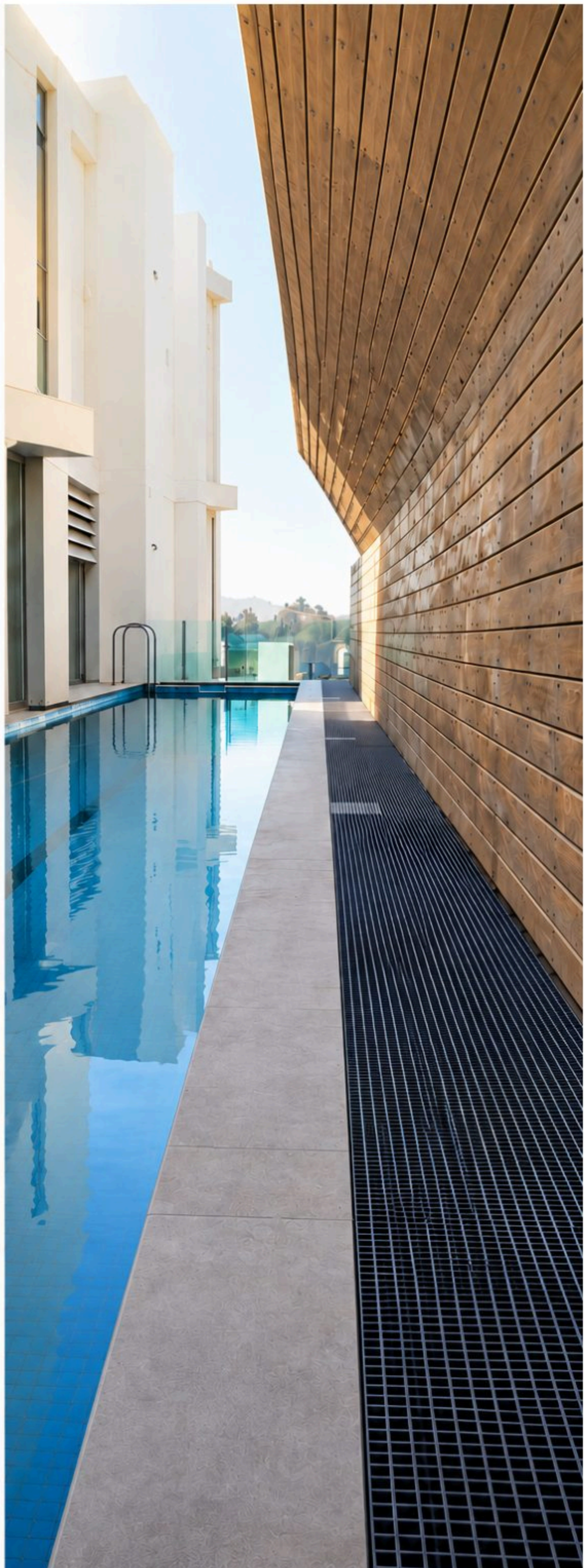
# Advanced Composite Drainage Solutions

**Progrit SPG Composite Drainage Grating** is a high-performance, custom-manufactured solution engineered for modern drainage applications across commercial, infrastructure, and industrial environments.

Manufactured using advanced composite materials, this system delivers a durable, corrosion-resistant alternative to traditional steel grating, while providing excellent anti-slip performance and optimized drainage efficiency in demanding conditions.

### Why Progrit SPG?

- ✓ **Corrosion resistant** for harsh, wet, and coastal environments
- ✓ **Lightweight** for easier handling and faster installation
- ✓ **High anti-slip performance** for improved safety
- ✓ **Custom cut-to-size** for project requirements
- ✓ **Suitable** for **retrofit** and new drainage systems
- ✓ **Engineered** for pedestrian and industrial applications



## KEY PERFORMANCE

# Certified Anti-Slip Performance

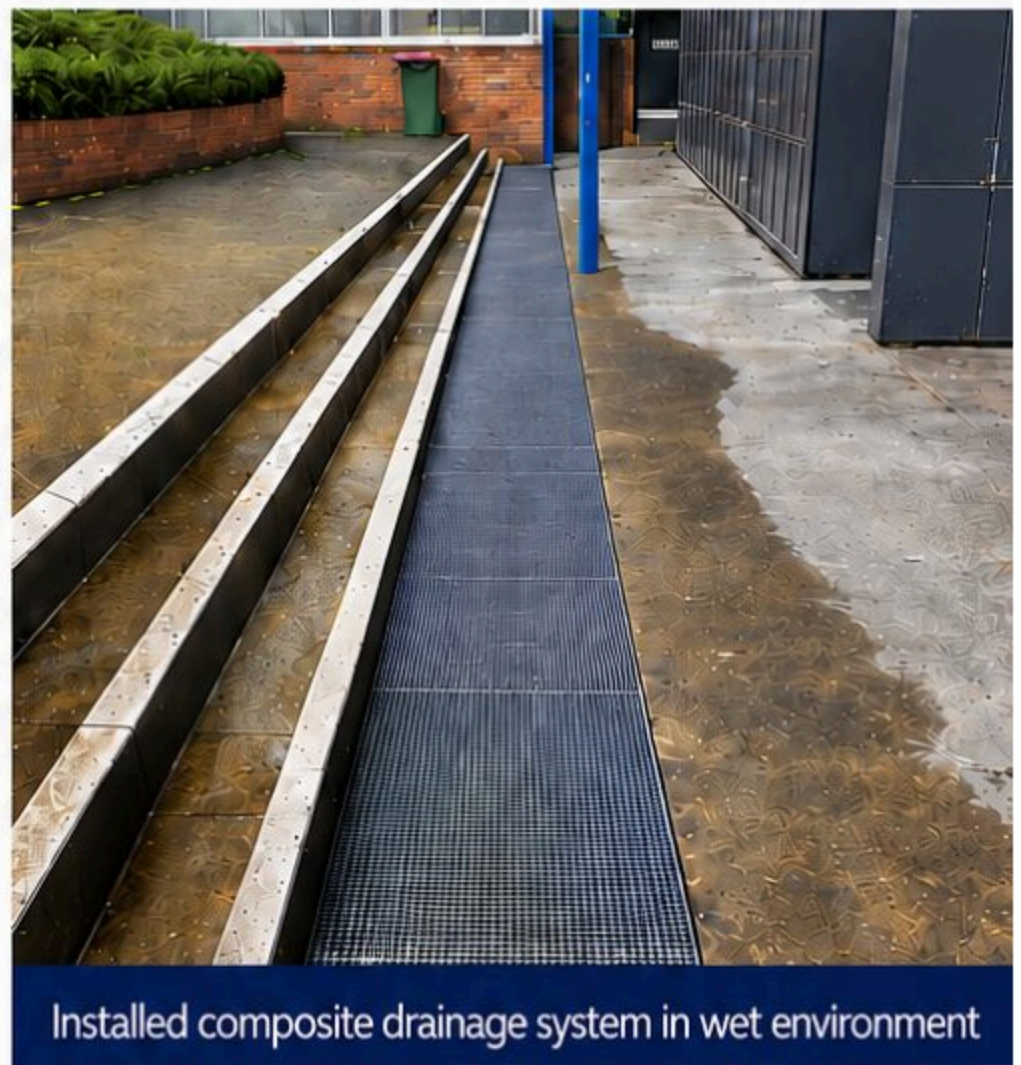
**P5** Slip Rated

**R12** Oil Wet Rated

All Progrit SPG **Composite Grating** features a silicon carbide anti-slip surface, independently tested in accordance with AS4586 by a **NATA** certified testing authority.

- **Class P5** – Wet Pendulum (AS4586)
- **R12** – Oil-Wet Inclining Platform

Designed to deliver reliable slip resistance in wet, oily, and high-risk environments.



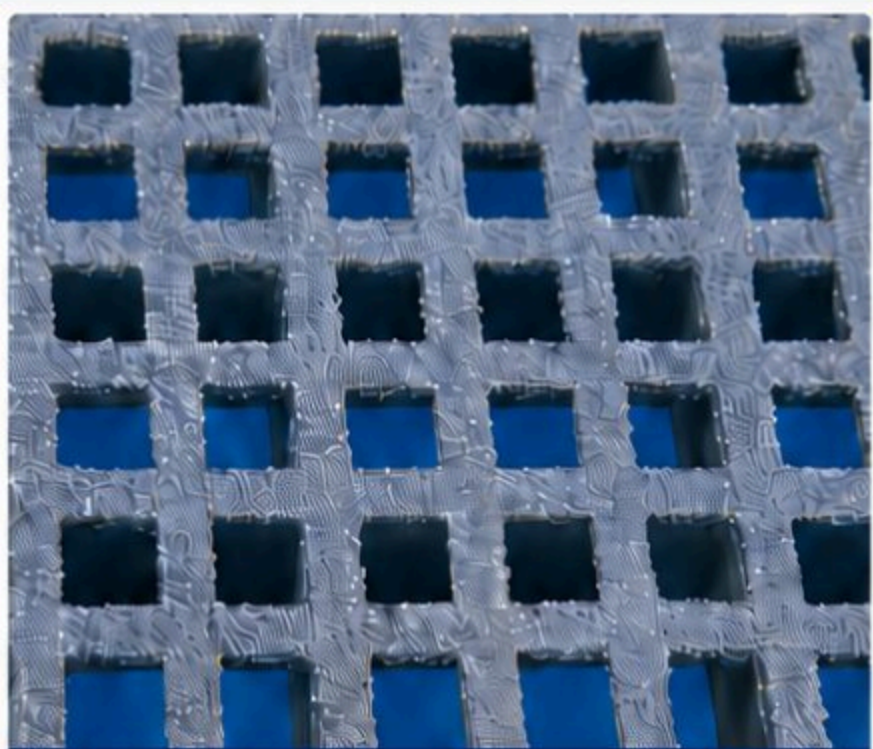
## Performance Benefits

- ✓ **Superior slip resistance** in wet and oily conditions
- ✓ **Non-corrosive** composite construction
- ✓ **Direct replacement** for steel grating systems
- ✓ **Long-term durability** in aggressive environments

# PRODUCT RANGE OVERVIEW

## Safety Series

Architectural & Pedestrian Applications



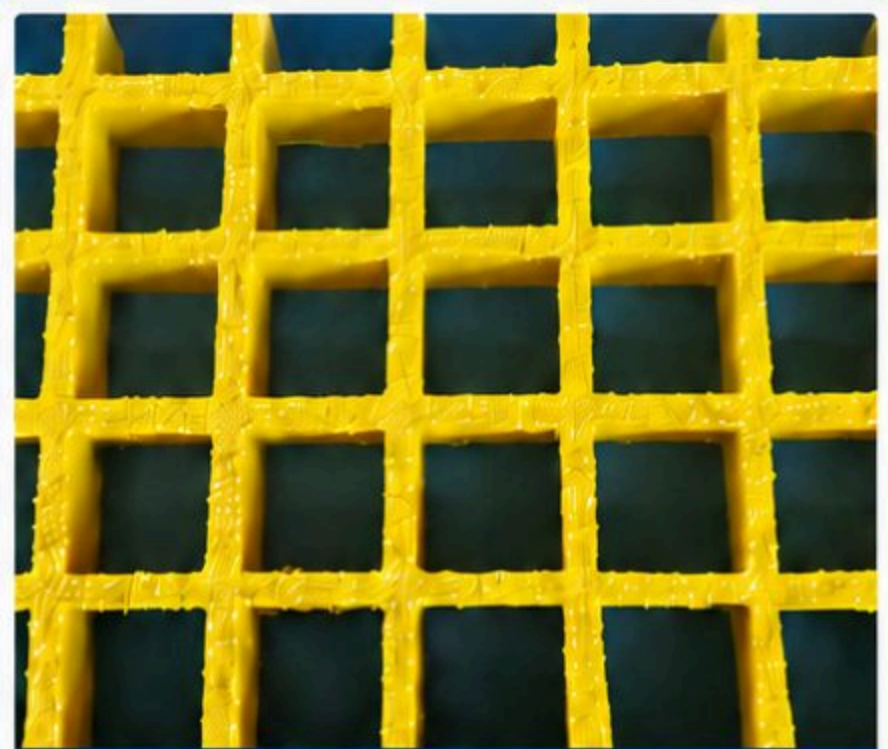
Fine & Medium Aperture options  
with anti-slip surface

### Key Features

- ✓ 30mm thickness
- ✓ **Fine Aperture** option
- ✓ **Medium Aperture** option
- ✓ Open area: 30% – 42%
- ✓ Maximum panel length:  
up to 1250mm
- ✓ Custom cut-to-width

## Industrial Series

Heavy Duty & Infrastructure Applications



Designed for high load and  
industrial drainage

### Key Features

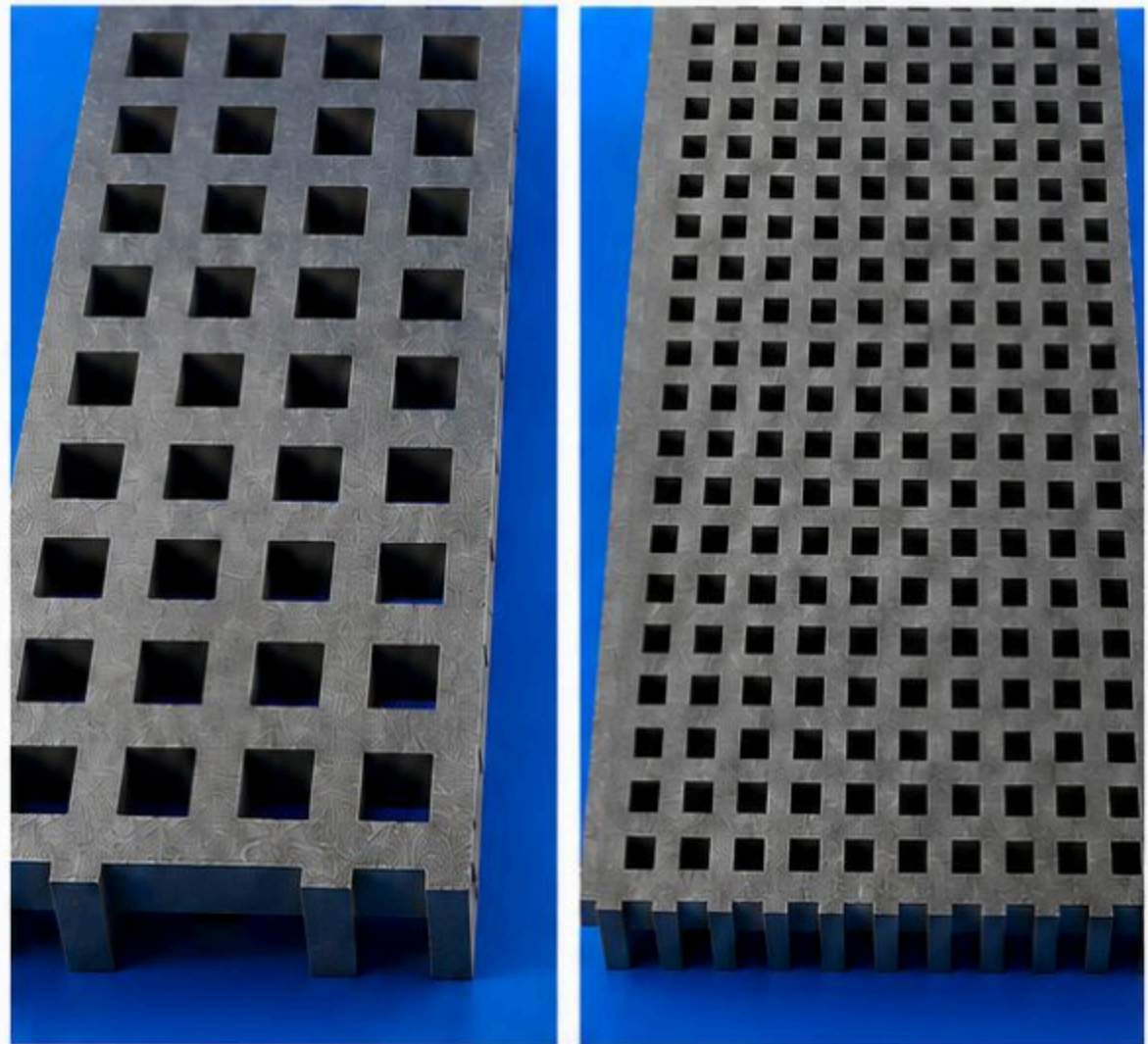
- ✓ 25mm, 38mm, 50mm  
standard thicknesses
- ✓ 60mm & 70mm available on request
- ✓ Open area: up to 68%
- ✓ Maximum panel length:  
up to 1220mm
- ✓ Suitable for **heavy-duty  
& trafficable applications**  
(subject to design review)

## Fine Aperture – Heel Safe Design

# Safety Series

For pedestrian, public infrastructure, and commercial drainage applications.

The Safety Series is designed to combine drainage efficiency with pedestrian safety. It offers controlled open area and a heel-safe surface profile while maintaining high anti-slip performance.



Safety Series composite grating – heel-safe, anti-slip surface

## Safety Series Specifications

Product Type	Thickness	Nominal Aperture	Open Area	Max Length
Fine Aperture	30mm	8 × 8mm	30%	1250mm
Medium Aperture	30mm	12 × 12mm	42%	1250mm

## Safety Series Benefits



### Heel-safe design

Fine aperture openings help prevent heel entrapment for safer pedestrian access.



### Anti-slip silicon carbide surface

Provides excellent traction in wet and dry conditions.



### Suitable for public and pedestrian use

Ideal for footpaths, walkways, plazas, and public facilities.



### Manufactured cut-to-size

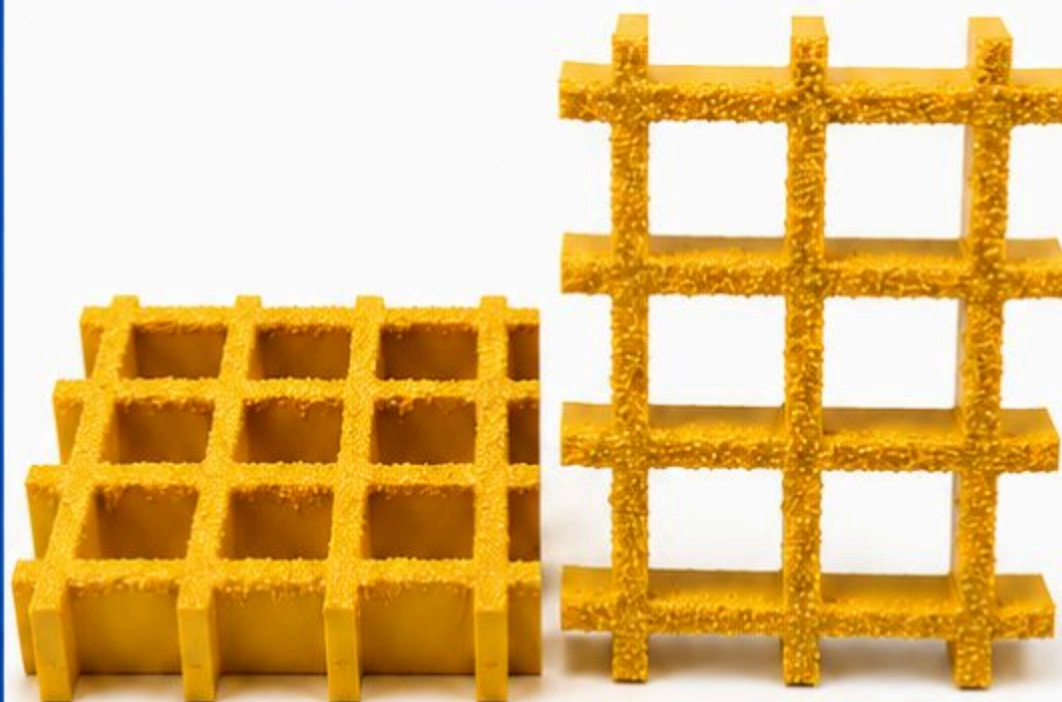
Custom made to suit project dimensions.

# Industrial Series

For industrial drainage, steel replacement, and heavy-duty applications.

The Industrial Series is engineered for greater drainage flow, industrial durability, and replacement of traditional steel drainage grates.

High Open Area – Maximum Drainage



Industrial Series composite grating – high strength, high open area, built for demanding applications.

## Industrial Series Specifications

Thickness	Nominal Aperture	Open Area	Max Single Length	Typical Application
25mm	31 x 31mm	68%	1220mm	General industrial drainage
38mm	31 x 31mm	68%	1220mm	Steel replacement, medium duty
50mm	28 x 28mm	56%	1220mm	Heavy-duty applications
60mm	27.5 x 27.5mm	54%	On Request	Special applications
70mm	27 x 27mm	49%	On Request	Special applications

## Industrial Series Benefits



### High strength and durability

Built to withstand heavy loads and harsh conditions.



### High open area for efficient drainage

Optimized design for maximum water flow.



### Corrosion and chemical resistant

Ideal for corrosive and industrial environments.

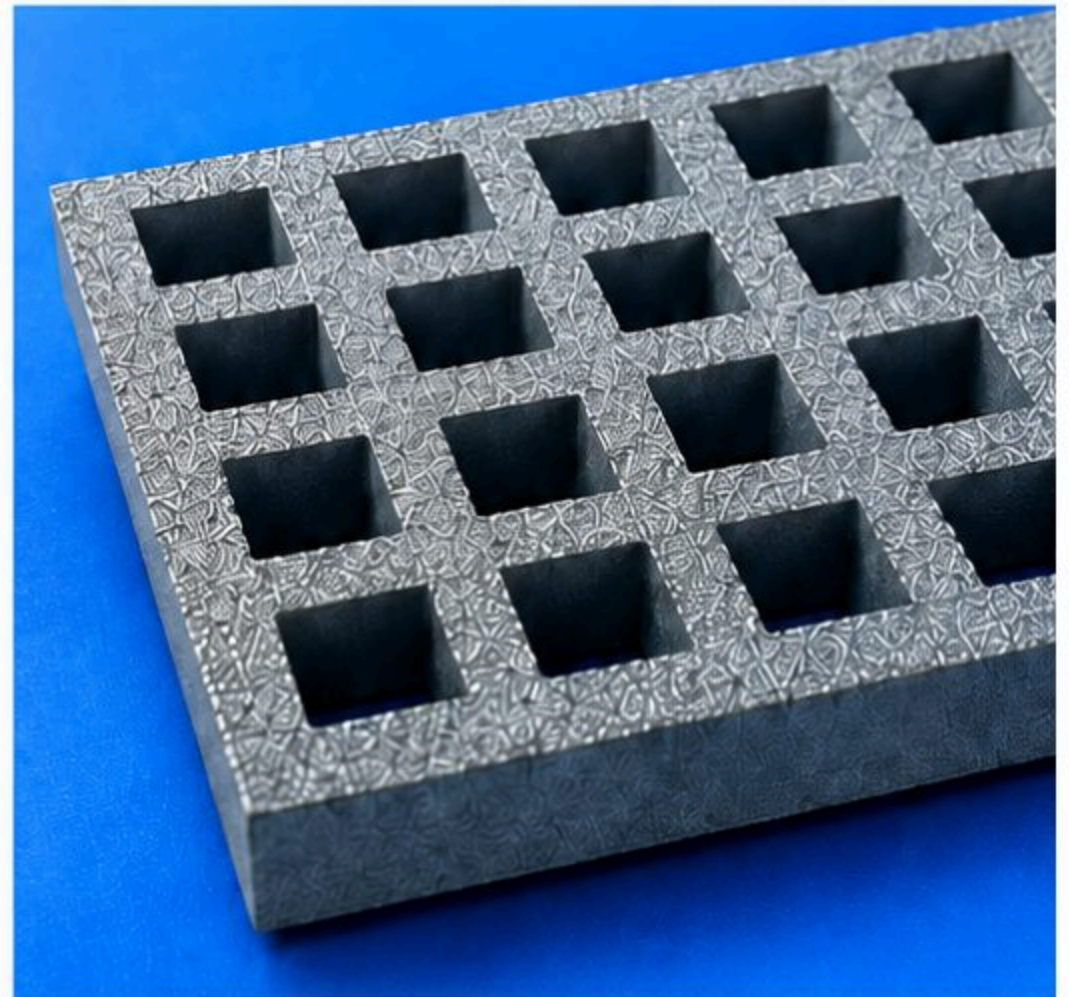


### Low maintenance and long service life

Cost-effective solution with minimal upkeep.

# Open Area Matters

Open area is critical to drainage performance. Progrit SPG Composite Drainage Grating is engineered to balance flow, safety, and structural performance.



Series	Product	Open Area
Safety Series	Fine Aperture	30%
Safety Series	Medium Aperture	42%
Industrial Series	25mm / 38mm	68%
Industrial Series	50mm	56%

## Design Intent



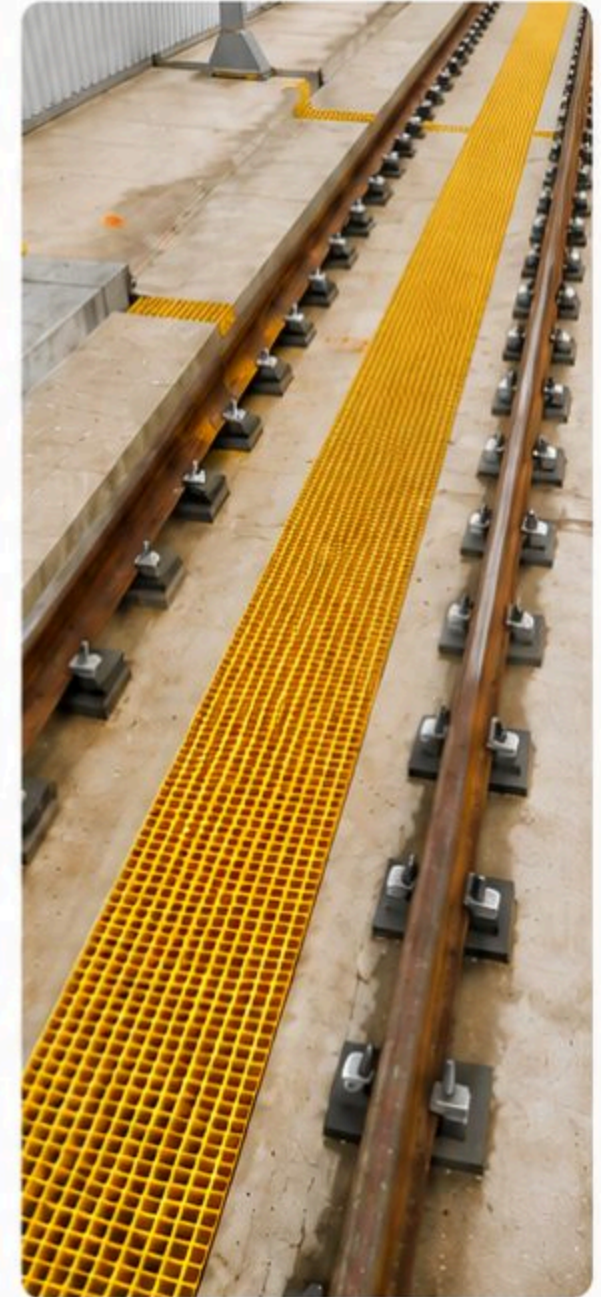
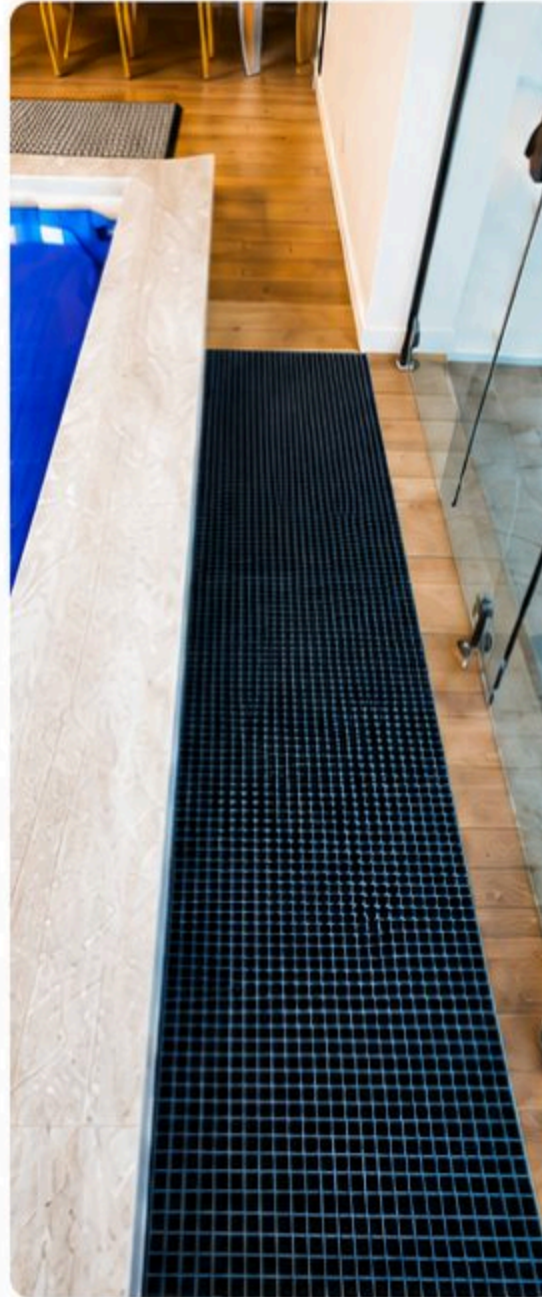
- **Safety Series** prioritises pedestrian safety and controlled drainage



- **Industrial Series** prioritises maximum water flow and heavy-duty service conditions

## Panel Sizes

Progrit SPG Composite Drainage Grating panels are available in a range of standard sizes to suit different load, span and design requirements.



## Custom Manufacturing

All Progrit SPG Composite Drainage Grating is custom manufactured to suit client requirements.

### Standard Supply Format

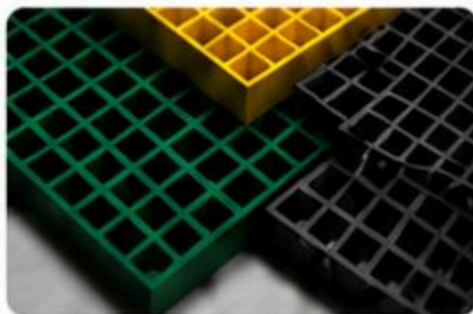
- **Safety Series:** up to 1250mm long in one piece, cut to required width
- **Industrial Series:** up to 1220mm long in one piece, cut to required width

### Additional Options

- Modular panel layouts for larger areas
- Custom thicknesses available on request
- Retrofit replacement solutions for existing steel grates



### COLOURS



Available in a range of standard colours with custom colours available upon request.



### APERTURE SIZES



Fine, Medium and custom aperture sizes to meet safety and performance needs.



### CUSTOM SIZING



Custom panel sizes available to suit project specifications and installation needs.



## TAILORED SOLUTIONS

Our team works with you to deliver tailored solutions that balance performance, safety and design requirements for every project.

## Support Condition

All Progrit SPG Composite Drainage Grating is designed for bi-directional support and is typically installed across the drain opening. Performance should be assessed based on the clear span across the drain width.

### Standard Clear Spans

- 300 mm
- 450 mm
- 600 mm
- Larger widths available on application



## Engineering Assumption Table

### Safety Series

#### Uniform Load Deflection (mm) @ 2.5 kPa Load

Product Type	Thickness	300 mm Clear Span	450 mm Clear Span	600 mm Clear Span	Notes
Fine Aperture 8 x 8 mm	30 mm	0.29	0.45	0.62	Pedestrian loading assumption
Medium Aperture 12 x 12 mm	30 mm	0.33	0.49	0.65	Higher open area with similar commercial application

### Industrial Series

#### Uniform Load Deflection (mm) @ 5 kPa Load + Break Point Load

Thickness	300 mm Clear Span	450 mm Clear Span	600 mm Clear Span	Break Point Load @ 450 mm Span	Notes
25 mm	0.79	1.22	1.62	38.4 kN/m	General industrial drainage
38 mm	0.38	0.63	0.82	126.8 kN/m	Steel replacement applications
50 mm	0.08	0.33	0.57	213.2 kN/m	Heavy-duty applications
60 mm	Special Application Only		—	—	Contact engineering team
70 mm	Special Application Only		—	—	Contact engineering team



### Technical Note

All load data is based on laboratory testing and is provided as a guide only. Actual performance may vary depending on installation conditions, support configuration, and site-specific loading requirements.

For critical applications, suitability must be verified by the project engineer. Staircare Australia Pty Ltd accepts no liability for misuse or applications outside recommended design parameters.



### Break Point Load

Break Point Load represents an assumed ultimate failure load under concentrated loading conditions. It is included for Industrial Series products only, where applications may involve forklift traffic, wheel loading, or heavy service conditions.

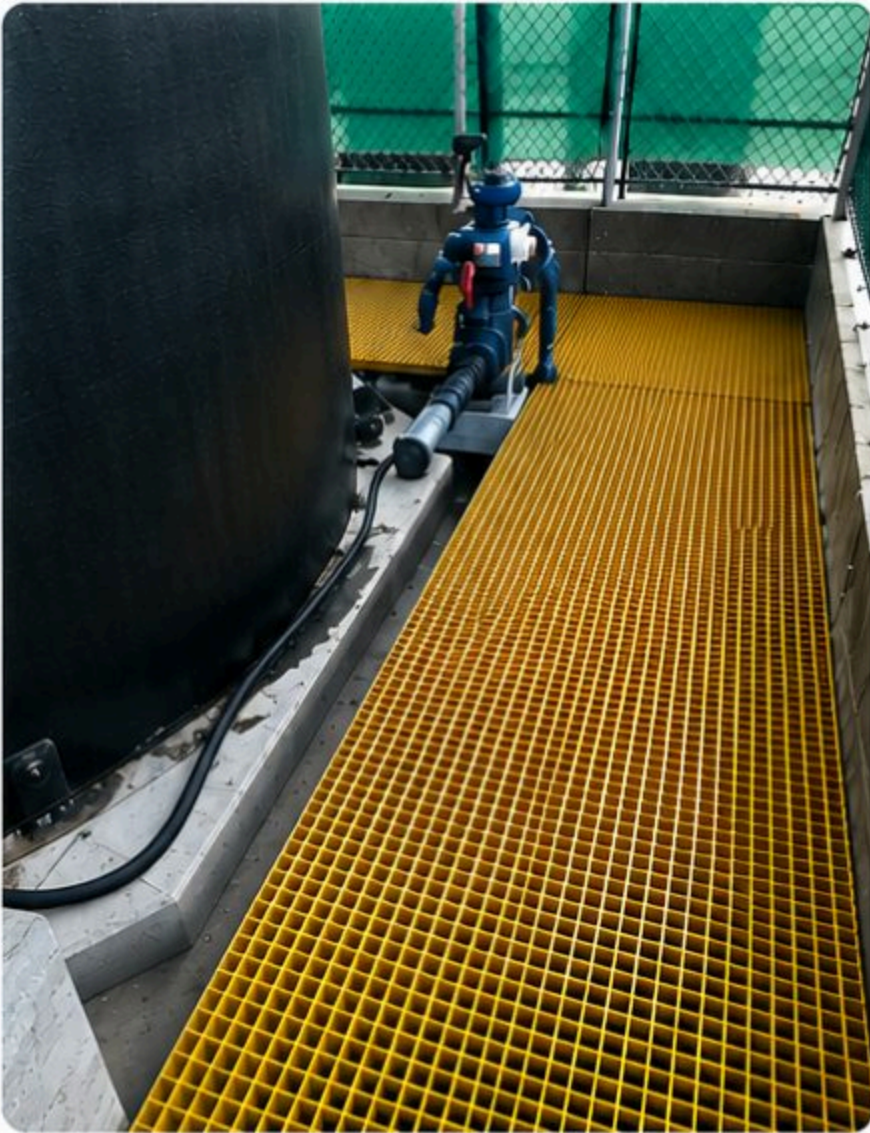


### Design Notes

- Larger drain widths available on application
- Forklift and wheel traffic must be reviewed case-by-case
- Final product selection depends on:
  - Support conditions
  - Tyre contact area
  - Load frequency
  - Required safety factors
  - Environmental conditions

## Typical Applications

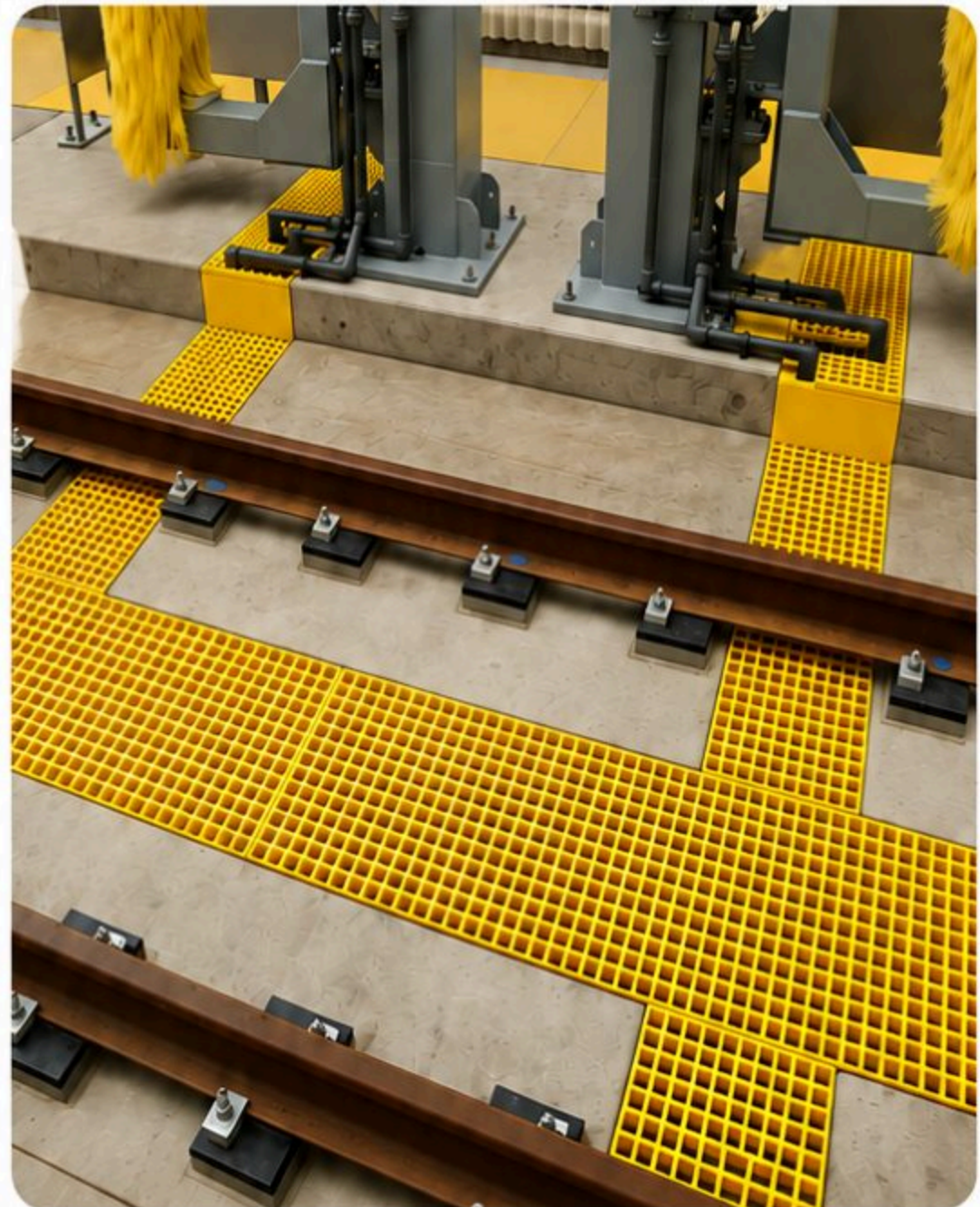
- Public walkway drainage
- Commercial developments
- Council infrastructure
- Stormwater pits
- Trench drains
- Industrial washdown areas
- Processing plants
- Utilities and infrastructure upgrades
- Steel grate replacement projects



## Design Considerations

When assessing drainage grating for service conditions, the following should be considered:

- Clear span across drain width
- Support bearing condition
- Uniform or concentrated load
- Wheel load or forklift traffic
- Tyre contact area
- Deflection requirements
- Safety factors
- Environmental exposure



### Design & Engineering Information

The technical data presented in this catalogue has been prepared to assist with product selection and preliminary design. Final performance values and compliance requirements should be verified for each individual application and project condition.



# STAIRCARE PROGRIT

ANTI SLIP FOR INDUSTRIES

## PROGRIT SPG

*Engineered Composite Solutions for Modern Infrastructure*

For project enquiries, technical support,  
and custom drainage solutions,  
contact our team.



PHONE

02 9939 4497



EMAIL

[info@staircare.com.au](mailto:info@staircare.com.au)



WEBSITE

[www.staircare.com.au](http://www.staircare.com.au)



### **We're here to help.**

Our team is ready to assist with your enquiries,  
provide expert advice and deliver tailored  
solutions for your project.

**Staircare Product SPG is a Division on Staircare Australia Pty Ltd**