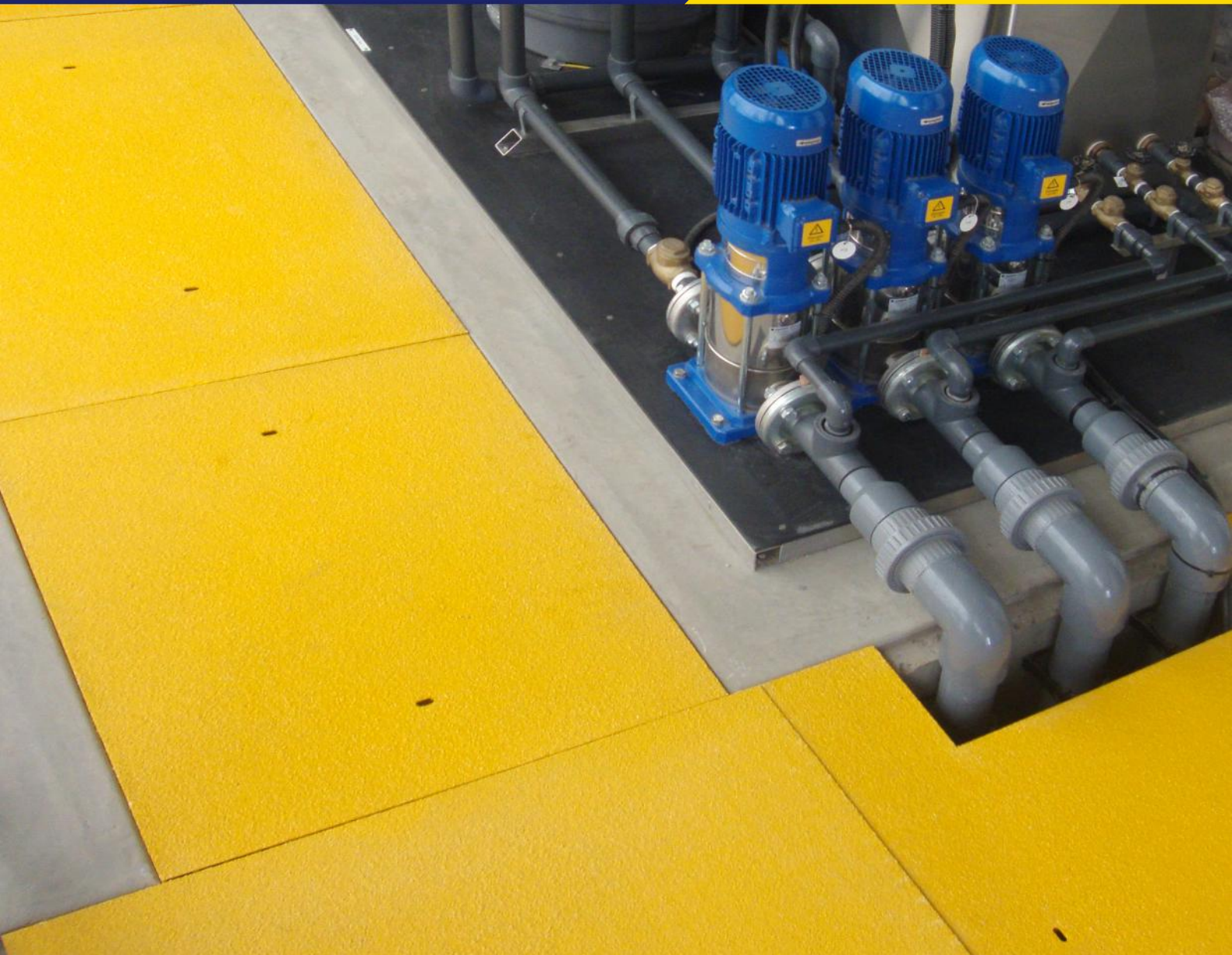




STAIRCARE PROGRIT
ANTI SLIP FOR INDUSTRIES

SPG™ TRENCH SOLID TOP COVER

Tailor made Anti-Slip Safety
for Industries **since 2004**





FIBREGLASS TRENCH, GULLY & DUCT COVERS

We offer high-quality FRP covered gratings (Gratings with cover, flat sheet, or panel cover) designed for new installations and replacements of trench covers, work platforms, and industrial flooring. The application of solid top covers include:

- ▶ Duct Covers
- ▶ Gully Covers
- ▶ Trench Covers
- ▶ Structural Flooring



STAIRCARE PROGRIT
ANTI SLIP FOR INDUSTRIES

APPLICATIONS:

STRUCTURAL FLOORING:

Manufactured using a precision-engineered fibreglass pultrusion process, our structural flooring panels provide superior strength and durability. They are perfect for use as trench, gully, and duct covers in a wide range of industries.

INDUSTRIAL FLOORING:

Our structural flooring solutions are designed for maximum strength while being lightweight and easy to install. Featuring an anti-slip surface and requiring no maintenance, they are ideal for industrial and commercial applications.

Our heavy-duty fibreglass trench, duct, and gully covers, as well as industrial flooring solutions, are engineered for durability and long-term performance in demanding environments.



HEAVY-DUTY FIBREGLASS COVERS & INDUSTRIAL FLOORING

Our heavy-duty fibreglass trench, duct, and gully covers, as well as industrial flooring solutions, are engineered for durability and long-term performance in demanding environments.

TRENCH & DUCT COVERS

Our structural flooring solutions are designed for maximum strength while being lightweight and easy to install. Featuring an anti-slip surface and requiring no maintenance, they are ideal for industrial and commercial applications.

STRUCTURAL FLOORING

Manufactured using a precision-engineered fibreglass pultrusion process, our structural flooring panels provide superior strength and durability. They are perfect for use as trench, gully, and duct covers in a wide range of industries.

KEY ADVANTAGES:

Covered gratings are an excellent choice for both new construction and refurbishment projects, providing a superior alternative to traditional materials such as steel, timber, and concrete. Key advantages include:

- ▶ **HIGH STRENGTH & LIGHTWEIGHT**
Saves time and reduces labour costs
- ▶ **QUICK & EASY INSTALLATION**
Reduces labour costs and time
- ▶ **Anti-Slip Surface**
Improves safety in various environments
- ▶ **NON-CONDUCTIVE / NON MAGNETIC**
ideal for the power industry
- ▶ **CORROSION & FIRE RESISTANCE**
Ensures long-term reliability
- ▶ **IMPACT RESISTANCE**
Withstands heavy loads and harsh conditions
- ▶ **Zero Maintenance**
No ongoing upkeep require

These advantages make our products ideal for both new installations and replacements in industrial applications. Thanks to these benefits, covered gratings are a preferred solution for duct covers, replacing outdated and cumbersome flooring materials.

DUCT COVERS

Covered gratings are an excellent choice for both new construction and refurbishment projects, providing a superior alternative to traditional materials such as steel, timber, and concrete. Key advantages include:

- ▶ **Lightweight**
Easier to handle and install
- ▶ **Anti-Slip Surface**
Improves safety in various environments
- ▶ **Easy Installation**
Reduces labour costs and time
- ▶ **Zero Maintenance**
Eliminates the need for regular upkeep

Thanks to these benefits, covered gratings are a preferred solution for duct covers, replacing outdated and cumbersome flooring materials.





WHAT IS FRP?

Fibre-Reinforced Plastic (FRP) is a high-performance composite material consisting of a polymer matrix reinforced with strong fibres such as glass, carbon, aramid, or basalt. These fibres provide exceptional strength and stiffness, making FRP an ideal material for demanding environments.

WHY CHOOSE FRP?

- ▶ **High Strength-to-Weight Ratio**
Strong yet lightweight, making it easy to handle and install.
- ▶ **Superior Corrosion & Rot Resistance**
Unaffected by moisture, chemicals, and extreme weather conditions.
- ▶ **Low Maintenance & Long Service Life**
Unlike traditional materials, FRP requires minimal upkeep and reduces the need for energy-intensive replacements.
- ▶ **Versatile Applications**
Used across industries including automotive, aerospace, construction, mining and marine sectors.

Built to last and designed for safety, **Staircare-ProGrid™ FRP Covers** offer a long-term, efficient solution for improving workplace and public area safety.

SLIP RESISTANCE TEST RESULTS

Slip Resistance Classification of New Pedestrian Surface Materials

AS 4586:2013 Appendix A (Wet Pendulum Test)

Reported SRV of Sample: 69

Class P5

KEY Slip Resistance Classification Based on Wet Pendulum Test (AS 4586:2013)

Class	BPN Range	Description
P0	Less than 12	Very slippery and hazardous surface under wet conditions.
P1	12 to 24	Slippery surface, suitable for areas requiring low slip resistance.
P2	25 to 34	Relatively safe surface, but may be slippery under certain conditions.
P3	35 to 44	Safe surface for most conditions, but caution may be needed in very wet conditions.
P4	45 to 54	Very safe surface, suitable for areas with a high risk of slipping.
P5	55 and above	Extremely safe surface, ideal for high-risk areas such as pools or industrial kitchens.

Slip Resistance Classification of New Pedestrian Surface Materials

AS 4586:2013 Appendix B (Dry Floor Friction Test)

Reported SRV of Sample: 1.00

Class D1

KEY DRY TEST RESULTS INTERPRETATION GUIDE (AUSTRALIAN STANDARD)

Classification Result	Test Result Mean Value (COF)	Notional contribution of the floor surface to the risk of slipping when dry
D1	≥ 0.40	Low to Moderate
D0	< 0.40	High to Very High

Slip Resistance Classification of New Pedestrian Surface Materials

AS 4586:2013 Appendix C (Oil-Wet Inclining Platform Test)

Correct Mean Overall Acceptance Angle:31°

Class R12

Oil Wet Ramp Inclining Platform Slip Rating	Corrected Ramp Angel
No Classification	Less than 6 degrees
R9	Equal or greater than 6 degrees, but less than 10 degrees
R10	Equal or greater than 10 degrees, but less than 19 degrees
R11	Equal or greater than 19 degrees, but less than 27 degrees
R12	Equal or greater than 27 degrees, but less than 35 degrees
R13	Equal or greater than 35 degrees

COLOUR OPTIONS

The **Progrit™ Solid Top Covers** are available in standard colours:

- ▶ Yellow
- ▶ Grey

Custom colour options are also available to meet your specific requirements such as : green and black.

Colours



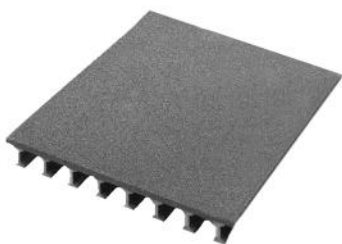
GRIT SIZE OPTIONS

Heavy Duty Grit – Particle Size: 1.0mm

- ▶ Ideal for wet, frosty, and oily conditions
- ▶ Suitable for commercial, industrial, and domestic environments
- ▶ Primarily for exterior use but can also be used indoors in wet or high-risk areas

STANDARD GRIT – PARTICLE SIZE: 0.5mm

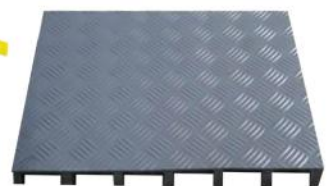
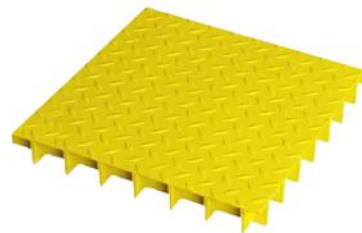
- ▶ Best for wet and oily conditions
- ▶ Perfect for more sensitive areas, such as working zones and high foot traffic areas
- ▶ Suitable for industrial environments and areas requiring extra care



STANDARD GRIT



HEAVY DUTY GRIT



PROGRIT OFFERS A VARIETY OF ANTI-SLIP MARKINGS ON THE COVER PLATE

SIZES & SPECIFICATIONS

The **SPG Solid Top Cover** consists of two parts:

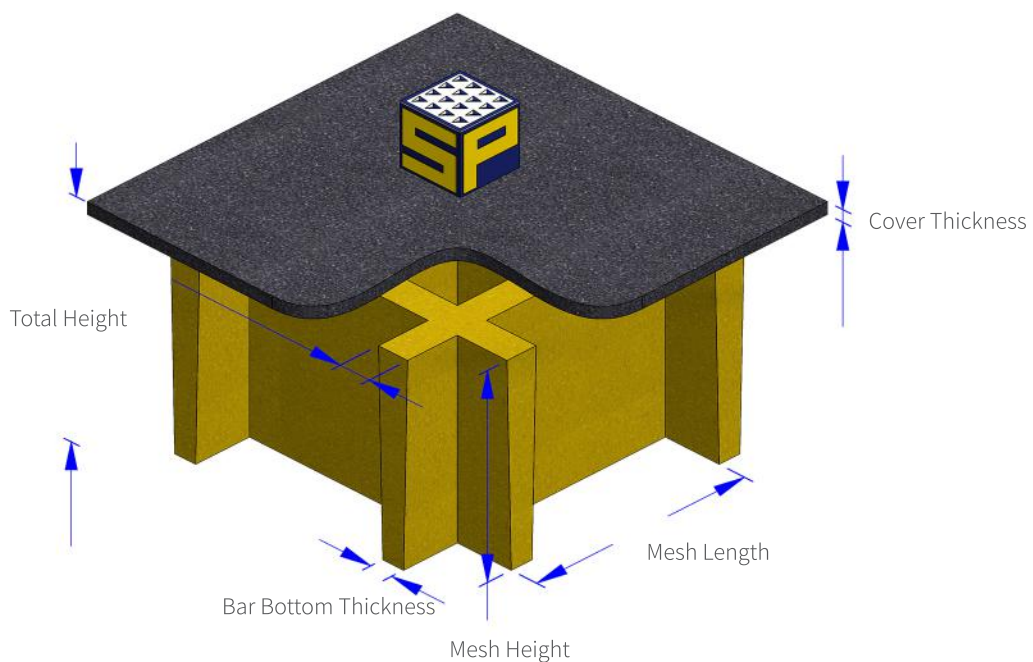
- ▶ The Mesh
- ▶ The Cover Plate

MESH SPECIFICATIONS

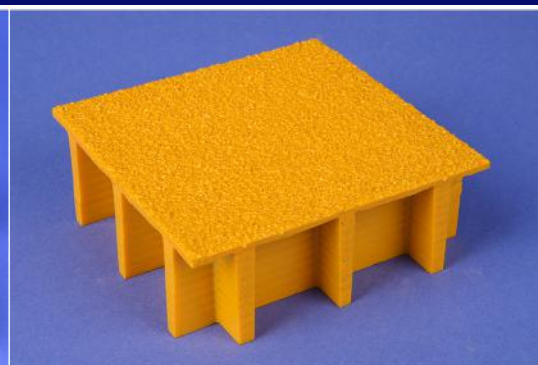
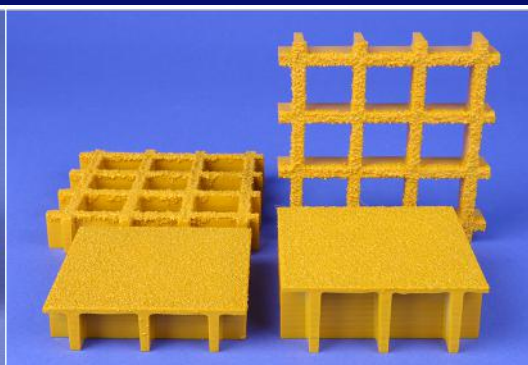
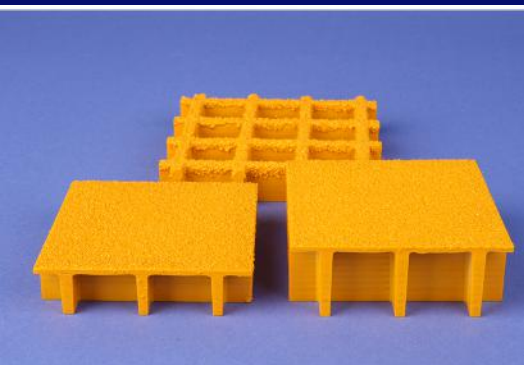
- ▶ **Standard Mesh Size**
38x38 mm with an average bar thickness of 5.5 mm
- ▶ **Available Mesh Thickness**
20 mm, 25 mm, or 38 mm
- ▶ **Alternative Mesh Option**
50x50 mm with a 7.8 mm bar thickness
- ▶ **Heavy Duty Mesh**
50x50 mm with a 10 mm thickness and an average bar thickness of 10 mm

COVER PLATE THICKNESS

- ▶ Available in 3 mm or 5 mm







SIZES & SPECIFICATIONS

The specifications of Progrit™ Solid Top Cover are outlined in the table below.

Code	Mesh size	Plate thickness Total thickness (mm)	Weight (kg/m ²)	Max span 2.5 (kPa) Span/def=200 - 300
SPG – ST 20+3	20x38x38	3 / 23	15.4	810 - 700
SPG – ST 20+5	20x38x38	5 / 25	19.1	960 - 840
SPG – ST 25+3	25x38x38	3 / 28	17.8	950 - 810
SPG – ST 25+5	25x38x38	5 / 30	21.5	1110 - 970
SPG – ST 30+3	30x38x38	3 / 33	20.2	1080 - 930
SPG – ST 30+5	30x38x38	5 / 35	23.9	1250 - 1090
SPG – ST 38+3	38x38x38	3 / 41	25.1	1310 - 1100
SPG – ST 38+5	38x38x38	5 / 43	28.8	1480 - 1270
SPG – ST 50+3	50x50x50	3 / 53	23.1	1570 - 1370
SPG – ST 50HD+3	50x38x38	3 / 53	47.6	1870 - 1630
SPG – ST 50+5	50x50x50	5 / 55	26.8	1770 - 1550
SPG – ST 50HD+5	50x38x38	5 / 55	51.3	1970 - 1720

CHEMICAL RESISTANCE GUIDE

Progrit SPG is made with high-quality fibreglass-reinforced resin, ensuring exceptional durability and performance. Our standard product lines utilize superior isophthalic polyester resin, providing excellent resistance to a variety of harsh conditions.

For specialized applications, Progrit Solid Top Cover also offers vinyl ester resin as an alternative for enhanced chemical resistance.

A detailed chemical resistance guide for molded products (including grated stair treads) is available upon request.

Chemical	ISOPHTHALIC POLYESTER		VINYL ESTER RESIN	
Environment	%Concentration	Max. Opera. Temp. F/C	%Concentration	Max. Opera. Temp. F/C
Acetic Acid	50	125/52	50	180/82
Aluminum Hydroxide	100	160/71	100	170/77
Ammonium Chloride	ALL	170/77	ALL	190/88
Ammonium Hydroxide	28	N/R	28	100/38
Ammonium Bicarbonate	15	125/52	50	150/65
Ammonium Sulphate	ALL	170/77	ALL	200/93
Benzene	N/R	N/R	N/R	N/R
Benzoic Acid	SAT	150/66	SAT	200/93
Borax	SAT	170/77	SAT	200/93
Calcium Carbonate	SAT	170/77	ALL	180/82
Calcium Nitrate	ALL	180/82	ALL	200/93
Carbon Tetrachloride	N/R	N/R	100	75/24
Chlorine Dry Gas	...	140/60	...	170/77
Chlorine Water	SAT	80/27	SAT	180/82
Chromic Acid	5	70/21	10	120/49
Citric Acid	ALL	170/77	ALL	200/93
Copper Chloride	ALL	170/77	ALL	200/93
Copper Cyanide	ALL	170/77	ALL	200/93
Copper Nitrate	ALL	170/77	ALL	200/93

CHEMICAL RESISTANCE GUIDE

Chemical	ISOPHTHALIC POLYESTER		VINYL ESTER RESIN	
Environment	%Concentration	Max. Opera. Temp. F/C	%Concentration	Max. Opera. Temp. F/C
Ethanol	50	75/24	50	90/32
Ethylene Glycol	100	90/32	100	200/93
Ferric Chloride	ALL	170/77	ALL	200/93
Ferrous Chloride	ALL	170/77	ALL	200/93
Formaldehyde	50	75/24	ALL	100/38
Gasoline	100	80/27	100	150/65
Glucose	100	170/77	100	200/93
Glycerin	100	150/66	100	200/93
Hydro Bromic Acid	50	120/49	50	120/49
Hydrochloric Acid	37	75/24	37	100/38
Hydrogen Peroxide	5	100/38	30	100/38
Lactic Acid	ALL	170/77	ALL	200/93
Lithium Chloride	SAT	150/66	SAT	200/93
Magnesium Chloride	ALL	170/77	ALL	200/93
Magnesium Nitrate	ALL	140/60	ALL	180/82
Magnesium Sulphate	ALL	170/77	ALL	190/88
Mercuric Chloride	100	150/66	100	190/88
Mercurous Chloride	ALL	140/60	ALL	190/88
Nickel Chloride	ALL	170/77	ALL	180/82
Nickel Sulphate	ALL	170/77	ALL	200/93
Nitric Acid	20	70/21	20	200/93
Oxalic Acid	ALL	75/24	ALL	100/38
Perchloric Acid	N/R	N/R	30	120/96
Phosphoric Acid	100	120/49	100	80/27

CHEMICAL RESISTANCE GUIDE

Chemical	ISOPHTHALIC POLYESTER		VINYL ESTER RESIN	
Environment	%Concentration	Max. Opera. Temp. F/C	%Concentration	Max. Opera. Temp. F/C
Potassium chloride	All	170/77	All	200/93
Potassium Dichromate	All	170/77	All	200/93
Potassium Nitrate	All	170/77	All	200/93
Potassium Sulphate	All	170/77	All	200/93
Propylene Glycol	All	170/77	All	200/93
Sodium Acetate	All	160/77	All	200/93
Sodium Bisulphate	All	170/77	All	200/93
Sodium Bromide	All	170/77	All	200/93
Sodium Cyanide	All	170/77	All	200/93
Sodium Hydroxide	N/R	N/R	25	150/66
Sodium Nitrate	ALL	170/77	ALL	200/93
Sodium Sulphate	ALL	170/77	ALL	200/93
Stannic Chloride	ALL	160/71	ALL	190/88
Sulphuric Acid	25	75/24	75	100/38
Tartaric Acid	ALL	170/77	ALL	200/93
Vinegar	100	170/77	100	200/93
Water, Distilled	100	170/77	100	180/82
Zinc Nitrate	ALL	170/77	ALL	200/93
Zinc Sulphate	ALL	170/77	ALL	200/93

ALL – concentrations; SAT – Saturated Solution; N/R – Not Recommended; ... No info. Available

REMARKS

The corrosion resistance data provided above is intended for general informational purposes only. Resin manufacturers have supplied test data indicating that the specified resin can withstand the listed corrosion conditions. While Staircare Progrit believes this data to be accurate, no guarantee, either expressed or implied, is made regarding specific performance.

- For optimal results, testing in specific environments is recommended.
- Staircare Progrit liability for any claims arising from warranty breaches, negligence, or otherwise is limited to the purchase price of the materials sold.

SPG™ TRENCH SOLID TOP COVER

Choose Staircare-Progrit for reliable durable, and innovative safety and access solutions tailored to your needs.



STAIRCARE PROGRIT
ANTI SLIP FOR INDUSTRIES

A Division of Staircare Australia Pty Ltd

📍 2/84 Old Pittwater Road, Brookvale NSW 2100, Australia

☎ +61 (2) 9939 4497 🌐 www.staircare-progrit.com.au

✉ info@staircare.com.au