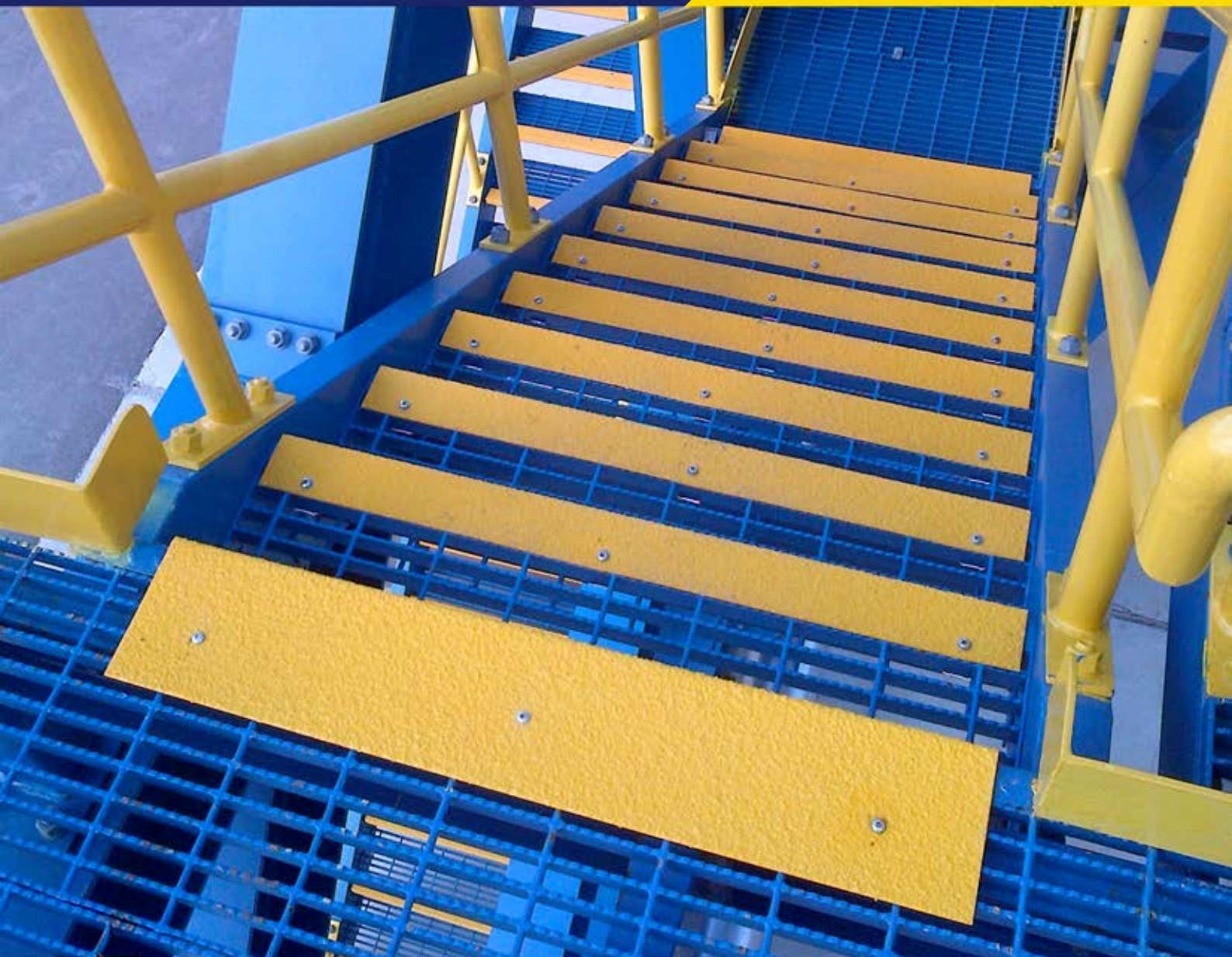




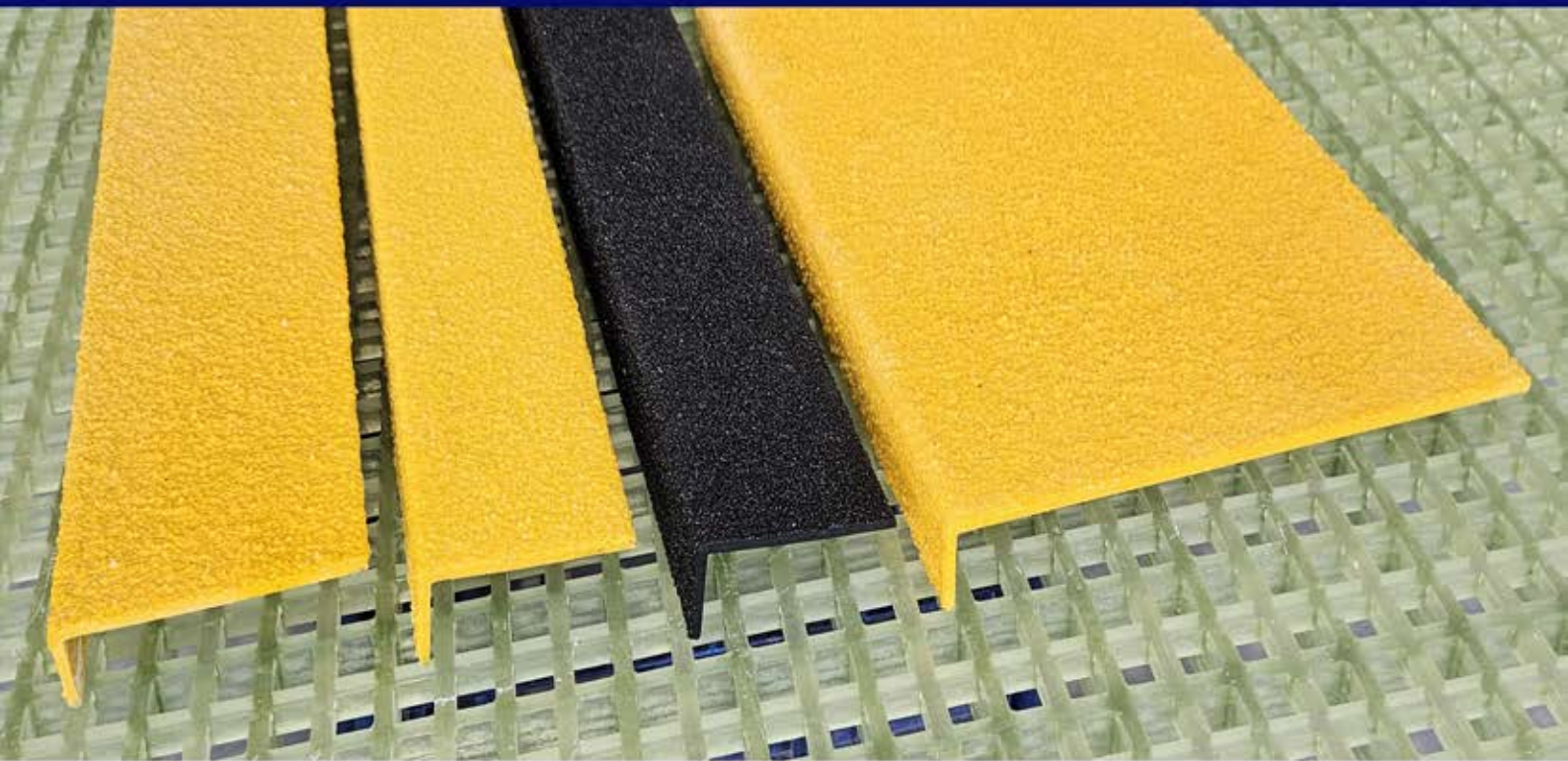
**STAIRCARE PROGRIT**  
ANTI SLIP FOR INDUSTRIES

# FRP ANTI-SLIP STAIR EDGE PROTECTION BY STAIRCARE PROGRIT

Tailor Made Anti-Slip Safety  
For Industries since 2004







## ANTI-SLIP STAIR EDGE PROTECTION BY STAIRCARE PROGRIT

Stair tread nosing are manufactured from high-quality fiberglass reinforced resin, designed to withstand even the most demanding environments. During production, silicon carbide or quartz is integrated into the surface to create a permanently bonded, slip-resistant grit. Staircare Progrit products offer outstanding resistance to a wide range of chemical and petrochemical spills, saltwater exposure, fumes, and fire. These qualities make Staircare Progrit an ideal solution for industrial, marine, and mining applications.



**STAIRCARE PROGRIT**  
ANTI SLIP FOR INDUSTRIES

# KEY FEATURES:



## ► SUPERIOR SLIP RESISTANCE

The top surface is coated with a high performance silicon carbide grit, providing an exceptional anti-slip material finish that outperforms traditional materials like aluminium or rubber stair nosing. This ensures safer footing even in wet, oily, or icy conditions.



## ► DURABLE & LONG-LASTING

Manufactured using high-strength fibreglass mat combined with isophthalic polyester resin, our stair edge protection are engineered to withstand heavy foot traffic, harsh weather conditions, and corrosive environments. They are maintenance free, do not de-laminate and are built to last.



## ► HIGH VISIBILITY DESIGN

Featuring safety yellow as standard with enhanced UV protection they are also available in Black or Black with Yellow nosing strip. Colour of choice are available on request, minimum order quantities may apply. Stair nosing enhances visibility in low-light areas, reducing the risk of accidents and aiding compliance with safety regulations such as slip resistance and luminance contrasts.



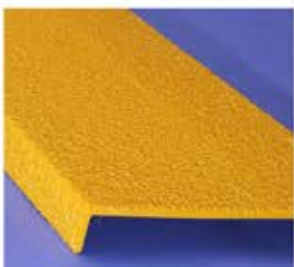
## ► VERSATILE APPLICATIONS

Suitable for installation on wood, concrete, tiles, metal or open grille stairs, our FRP stair edge protections are adaptable to various substrates and environments. Whether it's an emergency fire exit staircase, Off-shore platform, industrial or commercial building, our products deliver results.



## ► CUSTOMISABLE OPTIONS

Available in multiple colours. our stair are available in different dimensions and can be supplied cut to your required length. We offer a Safety Message service that will be made to your specification.



## ► EASY INSTALLATION

Lightweight and designed for quick retrofitting, Our stair tread nosing can be installed directly onto existing steps with minimal disruption. Fitting instruction can be made available on request and recommended fixings ensure a hassle-free professional installation process.









## ADVANTAGES AND BENEFITS:

- ▶ Slip-resistant
- ▶ Corrosion-resistant
- ▶ UV-resistant
- ▶ Anti-aging
- ▶ Fire-resistant
- ▶ Light weight
- ▶ High strength
- ▶ Low maintenance
- ▶ Cost-effective
- ▶ Easy to install
- ▶ Non-Conductive
- ▶ Non-Sparking
- ▶ Non-magnetic
- ▶ Waterproof
- ▶ Rot-proof
- ▶ Chemical-resistant
- ▶ Impact-resistant
- ▶ Long service life
- ▶ P5 Slip resistance
- ▶ Made from FRP (fibreglass Reinforced Plastic)
- ▶ Silicon Carbide Anti-Slip grit
- ▶ It doesn't de-laminate.

## WHY CHOOSE STAIRCARE PROGRIT

Staircare-SPG anti-slip stair tread nosing are engineered for long-lasting slip resistance. Manufactured from durable composite materials, it is ideal for use in harsh environments, including areas with high saltwater exposure. During production, silicon carbide is embedded into the surface, creating a permanently bonded, gritted finish. Anti-slip stair tread nosing are available in high-visibility yellow with built-in UV protection and feature a heavy-duty silicon carbide anti-slip grit for maximum slip resistance.

Staircare-SPG anti-slip products are made to measure and since it is a finished product it can be used immediately.

Our team is here to provide expert advice, customized solutions, and friendly customer service. Please email us on: [info@staircare.com.au](mailto:info@staircare.com.au) or give us a call: +61 2 9939 4497

# APPLICATIONS

## ► STAIRCASES

Stair tread covers highlight the step edge (Nosing) offering a luminance contrast and Class P5 Slip resistance, SPG-230 provides stair treads with a heavy duty Anti-slip nosing Plate that covers most of the step surface.

## ► VARIOUS SURFACES

Suitable for installation on just about any surface, including Chequered Plate, Steel, Concrete, Timber, Aluminium, Grated Stairs.

## ► INDUSTRIAL & COMMERCIAL USE

Perfect for construction sites, industrial settings, and cooling towers.

## ► INDOOR & OUTDOOR

Suitable for both interior and exterior applications.

## ► MARINE & OFF-SHORE PLATFORMS

Non-corrosive with UV protection, suitable for saltwater environment, It does not de-laminate. (as is often the issue with metal backed anti-slip products).

## ► MINING

Heavy-duty grit finish offers slip protection in the most demanding environments including underground and on mining equipment.



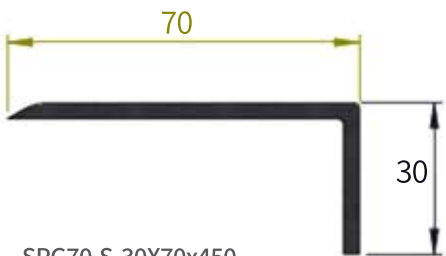
# TECHNICAL SPECIFICATIONS

## Materials

fibreglass Reinforced Polymer (FRP) Composite-based material with exceptional corrosion resistance and UV protection. Fire Retardant to comply with AS/ISO 9239.1-2003. Suitable for Temperatures ranging from -60°C to 120°C. Embedded silicon carbide anti-slip grit for Class P5 Slip resistance.

## Dimensions & Sizes

Complete size table for FRP anti-slip stair edge protection (Sorted by Dimensions from Smallest to Largest):



- SPG70-S-30X70x450
- SPG70-S-30X70x600
- SPG70-S-30X70x750
- SPG70-S-30X70x900
- SPG70-S-30X70x1200
- SPG70-HD-30X70x450
- SPG70-HD-30X70x600
- SPG70-HD-30X70x750
- SPG70-HD-30X70x900
- SPG70-HD-30X70x1200



- SPG100-S-30X100x450
- SPG100-S-30X100x600
- SPG100-S-30X100x750
- SPG100-S-30X100x900
- SPG100-S-30X100x1200
- SPG100-HD-30X100x450
- SPG100-HD-30X100x600
- SPG100-HD-30X100x750
- SPG100-HD-30X100x900
- SPG100-HD-30X100x1200



- SPG150-S/HD-30X150x450
- SPG150-S/HD-30X150x600
- SPG150-S/HD-30X150x750
- SPG150-S/HD-30X150x900
- SPG150-S/HD-30X150x1200



- SPG230-S/HD-30X230x450
- SPG230-S/HD-30X230x600
- SPG230-S/HD-30X230x750
- SPG230-S/HD-30X230x900
- SPG230-S/HD-30X230x1200

Custom sizes are also available upon request

# ANTI-SLIP STAIR TREAD COVER – SPG-70

The SPG-70 Tread Cover is engineered to enhance stair safety by reducing slipping and tripping hazards while clearly highlighting step edges. Ideal for a wide range of environments, it offers a durable, low-maintenance solution that is both practical and effective.

## KEY BENEFITS

### ► SUPERIOR SLIP RESISTANCE

Available in standard or heavy duty silicon carbide anti-slip grit.

### ► ENHANCED SAFETY

Improves visibility of step edges, Minimising trip hazards.

### ► VERSATILE APPLICATION

Fits most step types, including grated stairs using the SPG Universal Saddle Clip Fixing.

### ► CUSTOM CUT

Supplied to your specified length for immediate installation.

### ► DURABLE CONSTRUCTION

- High corrosion resistance
- Lightweight with strong impact resistance
- Long service life with minimal maintenance

### ► SAFE FOR DEMANDING ENVIRONMENTS

- Non-conductive, non-sparking, and non-magnetic
- Fire-resistant with low thermal conductivity

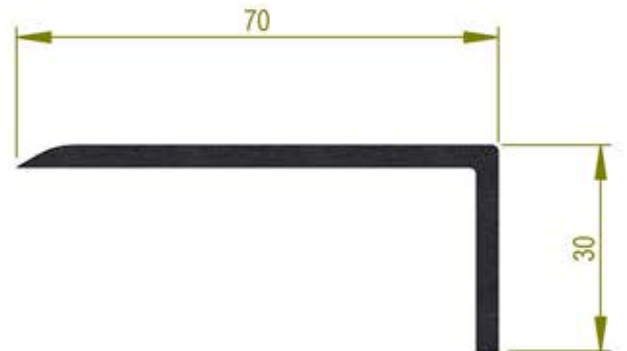
## SPECIFICATIONS

### ► DIMENSIONS

70mm (width) x 30mm (depth) x up to 3600mm (length)

### ► FINISH

Ready-to-install, made-to-measure



## INSTALLATION OPTIONS

### ► CHEQUERED PLATE / STEEL

Glue and fasten with Self-tapping steel (TEK) screws

### ► CONCRETE

Glue and secure with Countersunk 10G x 35mm Stainless steel SS316 screws with green star plug

### ► TIMBER

Use appropriate timber screws, 10G x 35mm

### ► GRATED STAIRS / GRILLE

Install using the SPG Universal Saddle Clip Assembly supplied in stainless steel SS316



## ANTI-SLIP STAIR TREAD COVER – SPG-230

The SPG-230 Tread Cover is specifically designed to enhance stair safety by covering most or the entire surface of a step. Manufactured in a high-visibility safety yellow and finished with a durable silicon carbide anti-slip grit, it offers maximum grip and long-lasting performance—even in the toughest environments.

### PRODUCT SPECIFICATIONS

#### ► DIMENSIONS

230mm (W) x 30mm (H) x up to 2000mm (L)  
Custom lengths available on request

#### ► COLOUR

Safety Yellow

#### ► FINISH

Heavy-duty silicon carbide grit for exceptional slip resistance



### KEY BENEFITS

- DELIVERED READY TO INSTALL – NO ADDITIONAL FABRICATION REQUIRED
- EXCELLENT CORROSION RESISTANCE
- HIGH SLIP RESISTANCE FOR IMPROVED SAFETY
- LIGHTWEIGHT WITH HIGH IMPACT STRENGTH
- LONG SERVICE LIFE WITH MINIMAL MAINTENANCE
- NON-CONDUCTIVE, NON-SPARKING, AND NON-MAGNETIC
- FIRE-RESISTANT AND LOW THERMAL CONDUCTIVITY
- AVAILABLE WITH SAFETY MESSAGE AND COLOUR OF CHOICE

### INSTALLATION OPTIONS

#### ► STEEL / CHEQUERED PLATE

Glue and fasten with Self-tapping steel (Tek) screws

#### ► CONCRETE

Glue and secure with Countersunk 10G x 35mm  
Stainless steel SS316 screws with green star plug.

#### ► TIMBER

Fix with suitable timber screws, 10G x 35mm

#### ► GRATED OR GRILLE STAIRS

Attach using our SPG Universal Saddle Assembly supplied in stainless steel SS316

The SPG-230 is ideal for industrial, commercial, and high-voltage areas where safety and durability are essential

## Surface Options

### ► STANDARD GRIT SURFACE

Ideal for general use

### ► HEAVY-DUTY SILICON CARBIDE GRIT

For extreme conditions.



## INSTALLATION GUIDE

### Installation

Staircare recommends to glue and screw stair tread covers hard surface stairs, Grated/Grille type stairs utilise SPG Universal Saddle Clip Assembly.

Tread covers are permanently fixed with polyurethane based adhesive and suitable screw fixings.

### Surface preparation

Remove any old paint and loose materials, ensure surface is clean, free of dust, grease, oils or other contaminants. The rear side of Tread covers must also be clean and free of contaminants.

Surface preparation guidelines cannot cover all possible site situations and it is always recommended to perform a spot adhesion test as part of the standard quality assurance audit of the installation.

### Recommended adhesives

#### ► SIKAFLEX 11FC FAST CURE

#### ► SIKAFLEX 291 MARINE GRADE

Staircare Australia has been successfully using Sikaflex Adhesive: Sikaflex 11FC for general applications and Sikaflex 291 for use in marine environments. However, there are many other suitable polymer based adhesives available.

Using a caulking gun apply a generous (5mm wide) bead in a snake line to the back of the stair tread cover. Only pre-glue as many tread covers as can be comfortably installed in a 15 minute period.

Starting at the top, place the Stair tread cover onto the step edge, gently pressing down and lightly moving the cover from side to side bedding the cover onto the Stair. If glue has squirted out the side, clean with acetone while the adhesive is still wet or cut off when dry with a Stanley knife. Continue by installing Fixings through pre-drilled holes according to the stair material.

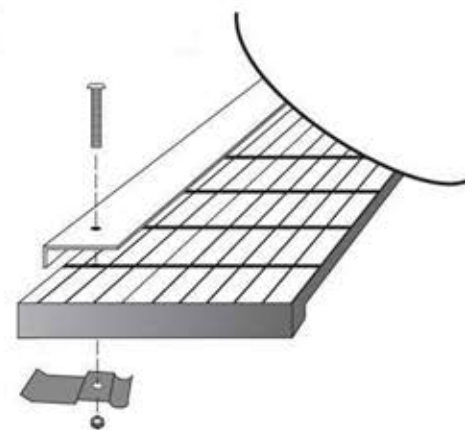
- **Chequered Plate / Steel:** Glue and fasten with self-tapping steel (TEK) screws or rivets.
- **Concrete:** Glue and secure with Countersunk 10G x 35-40mm stainless steel SS316 screws with green star plug.
- **Timber:** Glue and use appropriate timber screws 10G x 35-40mm
- **Grated Stairs / Grille:** Install using the SPG Universal Saddle Clip Assembly supplied in stainless steel SS316

### GENERAL NOTE

Please take care when working on stairs; always wear appropriate clothing and appropriate safety equipment according to your site requirements.

### MAINTENANCE

Anti-slip stair tread covers should be regularly maintained to keep their anti-slip properties and luminance contrast. Covers can be water or steam pressure cleaned using general detergents or degreasers. Do not use wire brushes or scrapers. Use a stiff bristle brush to remove any stubborn dirt. At the same time fixings should also be inspected to ensure that stair tread nosing are still safely fitted.





# SLIP RESISTANCE TEST RESULTS

Slip Resistance Classification of New Pedestrian Surface Materials  
AS 4586:2013 Appendix A (Wet Pendulum Test)

Reported SRV of Sample: 69

Class	P5
-------	----

## KEY Slip Resistance Classification Based on Wet Pendulum Test (AS 4586:2013)

Class	BPN Range	Description
P0	Less than 12	Very slippery and hazardous surface under wet conditions.
P1	12 to 24	Slippery surface, suitable for areas requiring low slip resistance.
P2	25 to 34	Relatively safe surface, but may be slippery under certain conditions.
P3	35 to 44	Safe surface for most conditions, but caution may be needed in very wet conditions.
P4	45 to 54	Very safe surface, suitable for areas with a high risk of slipping.
P5	55 and above	Extremely safe surface, ideal for high-risk areas such as pools or industrial kitchens.

Slip Resistance Classification of New Pedestrian Surface Materials  
AS 4586:2013 Appendix B (Dry Floor Friction Test)

Individual measurements	#1	#2	#3	#4	#5	#6	#7	#8
Run 1	0.85	0.98	1.11	0.82	0.93	0.93	0.92	0.91
Run 2	1.01	0.93	0.93	0.90	0.93	0.98	0.93	0.76
Cumulative run length 800 mm each			Run 1	Run 2	Reported SRV of Sample: 1			
Average Coefficient of Friction (COF)			0.93	0.92	Class D1			

## KEY DRY TEST RESULTS INTERPRETATION GUIDE (AUSTRALIAN STANDARD)

Classification Result	Test Result Mean Value (COF)	Notional contribution of the floor surface to the risk of slipping when dry
D1	$\geq 0.40$	Low to Moderate
D0	$< 0.40$	High to Very High

Slip Resistance Classification of New Pedestrian Surface Materials  
AS 4586:2013 Appendix C (Oil-Wet Inclining Platform Test)

Correct Mean Overall  
Acceptance Angle: 31°

Class	R12
-------	-----

Oil Wet Ramp Inclining Platform Slip Rating	Corrected Ramp Angel
No Classification	Less than 6 degrees
R9	Equal or greater than 6 degrees, but less than 10 degrees
R10	Equal or greater than 10 degrees, but less than 19 degrees
R11	Equal or greater than 19 degrees, but less than 27 degrees
R12	Equal or greater than 27 degrees, but less than 35 degrees
R13	Equal or greater than 35 degrees

# CERTIFICATIONS

## TEST CERTIFICATES

Tested both in-house and by accredited third parties, our products meet or exceed industry standards-delivering proven safety, quality, and compliance you can trust. Test reports include: Slip Resistance classification of new pedestrian surface materials AS/NZS 4586:2004 and AS/ISO 9239.1-2003 (Appendix D) Reaction to Fire Tests for Flooring.

Appendix A, Appendix B, Appendix C, Appendix D is available on request.

## WHY CHOOSE STAIRCARE-SPG ?

### ► FACTORY DIRECT SALES

Competitive pricing without compromising quality

### ► CUSTOM SERVICES

Tailored solutions to meet your specific needs

### ► SAFE FOR DEMANDING ENVIRONMENTS

- Non-conductive, non-sparking, and non-magnetic
- Fire-resistant with low thermal conductivity

### ► DURABLE CONSTRUCTION

- High corrosion resistance
- Long service life with minimal maintenance





# FRP ANTI-SLIP STAIR EDGE PROTECTION BY STAIRCARE PROGRIT

Choose Staircare Progrit for reliable durable, and innovative safety and access solutions tailored to your needs.



**STAIRCARE PROGRIT**  
ANTI SLIP FOR INDUSTRIES

A Division of Staircare Australia Pty Ltd

📍 2/84 Old Pittwater Road, Brookvale NSW 2100, Australia

☎ +61 (2) 9939 4497 🌐 [www.staircare-progrit.com.au](http://www.staircare-progrit.com.au)

✉ [info@staircare.com.au](mailto:info@staircare.com.au)