



**STAIRCARE PROGRIT**  
ANTI SLIP FOR INDUSTRIES

# SPG™ RIG FLOOR ANTI-SLIP SAFETY FLOOR MAT

Tailor made Anti-Slip Safety  
for Industries **since 2004**







## **SPG™ RIG MATS, Polyurethane Anti-Skid Mat for Drilling Rig Turntable Platform**

The **Staircare-Progrit SPG™ polyurethane anti-skid mat** is a high-performance, non-slip mat specifically engineered for drilling rig turntables and platform walkways used in **oil fields, mining, and engineering construction**. Designed to outperform traditional anti-skid surfaces such as checker steel plates, wooden boards, and rubber sheets, this advanced solution offers significantly enhanced safety, durability, and operational efficiency.



**STAIRCARE PROGRIT**  
ANTI SLIP FOR INDUSTRIES

# SPG™ RIG FLOOR ANTI SLIP SAFETY FLOOR MAT

## Challenges with Traditional Anti-Skid Surfaces

Conventional anti-skid systems typically rely on low-profile protrusions on steel or rubber surfaces. These designs offer limited traction, especially in environments contaminated by **oil or water**, where drainage is inefficient and surface grip is compromised. Such conditions pose serious safety risks and operational inefficiencies.

## Advanced Polyurethane Anti-Skid System

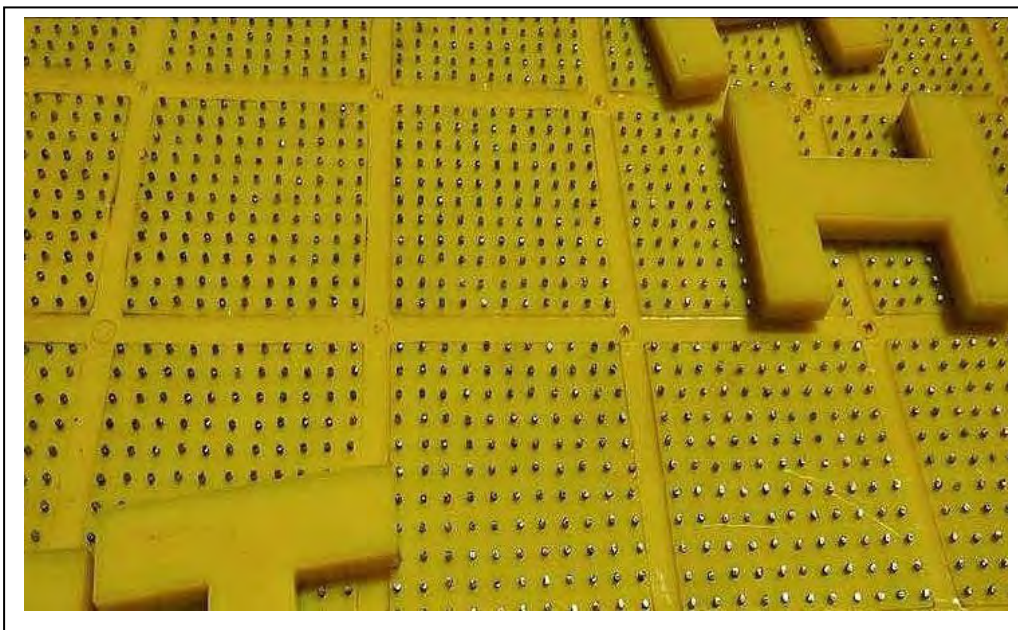
Our SPG™ anti-skid mat utilizes a **polyurethane rubber base plate**, known for its superior wear resistance — the highest among all rubbers. Key material properties include:

- ❑ **High strength and elasticity**
- ❑ **Excellent resistance to oil and solvents**
- ❑ **Superior low-temperature performance**
- ❑ **Long-term aging resistance**

## Innovative Anti-Skid Surface Design

The mat's upper surface features an integrated **grid of vertical and horizontal drainage grooves** that effectively channel away oil and water, maintaining a clean and dry surface underfoot. Within each square segment defined by the grooves, an **embedded pattern of raised stainless steel studs** is arranged in a **regular staggered layout** to maximize friction.

- ❑ **Raised and embedded stainless steel studs** provide anti-slip protection
- ❑ Designed to maintain comfort for operators standing or walking on the pad
- ❑ Drainage system ensures oil and water are discharged promptly, preserving traction



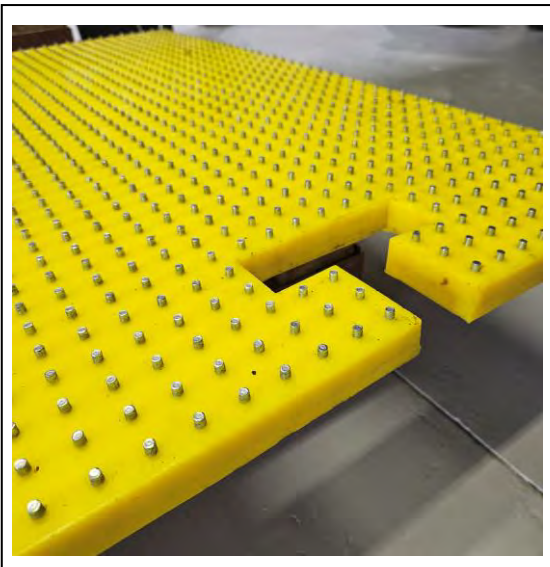


# Key Benefits

- ❑ **Superior anti-slip performance**, even in oil- and water-contaminated environments
- ❑ **Long service life** due to abrasion-resistant polyurethane
- ❑ **Enhanced operator safety and comfort**
- ❑ **Protection for rotary tables and drilling tools** by cushioning impact and reducing wear
- ❑ **Modular application:** SPG Mats can be laid around the turntable and along walkways, especially between drill pipe storage boxes

## Staircare-Progrit SPG™

Polyurethane anti-skid mat system offers a **technologically advanced, field-proven, and cost-effective** alternative to conventional skid-proofing solutions, delivering consistent performance in harsh industrial environments



# TECHNICAL SPECIFICATIONS OF ANTI-SLIP MAT MATERIAL

- ▶ Tensile Strength: >42 MPa
- ▶ Elongation: 420-650%
- ▶ Hardness: 90 ± 2 Shore A
- ▶ Tearing Strength: >90 kN/m
- ▶ Impact Rebound: 23-32%

## TECHNICAL REQUIREMENTS

- ▶ Length and width tolerance: ±1%
- ▶ Thickness tolerance: ±3 mm
- ▶ Rotary Table Mats are made to supplied Drawings and in close consultation with our Clients.

## FIRE TEST TO BRITISH STANDARD BS 476-7:1997

Classification: In accordance with the tested results and the classifications defined in BS 476-7:1997 (R2016) Fire Tests on Building Materials and Structures. The submitted Sample is classified as: CLASS 1

### ASSISTANCE

Please contact Staircare for any assistance that you may require, our Design Team are happy to assist with drawings and Job specific advice.

## Material Test Report

### Rotary Table and Rig Floor Mats

Product model	1042	Packing size	200kg/bucket
Production date	2020.7.14	Lot No.	0714-2
Test items	Test standard	Test result	
NC0%	4.2±0.2	4.35	
Technological Requirements			
Chain extender		MOCA	
Chain extender dose for 100 parts material		12.5	
Prepolymer temperature/°C		80	
Chain extender temperature/°C		120	
Post-vulcanization time/h/°C		12/100	
Product Properties			
Test Items	Standard Range	Executive Standard	Measured Results
Operating time /min	8--13		9'10'
Hardness/Shore A	90±2	GB/T 531.1-2008	89
Tensile strength/MPa	>42	GB/T 528-2009	45
100% fixed elongation stress/MPa	6--10	GB/T 528-2009	7
300% fixed elongation stress/MPa	14--25	GB/T 528-2009	16
Elongation/%	420--650	GB/T 528-2009	510%
Tear strength/KN/m	>90	GB/T529-2008	96
Impact rebound/% (25°C)	23--32	GB/T 1681-2009	26
Compression set/(20%×24h×75°C)			7

**Remark:** The data provided above are the results obtained under laboratory conditions on the basis of 100g prepolymer. Staircare Australia Pty Ltd believes the data to be true and accurate but no guarantee is expressed or implied as to specific performance. Testing for specific environments is recommended. Our responsibility for claims arising from breach of warranty, negligence or otherwise is limited to the purchase price of the materials sold by Staircare Australia Pty Ltd.





SPG mats are produced according to approved drawings. Inspection and test plans (ITP's) can be produced on request.

Products will be packed in export wooden boxes.

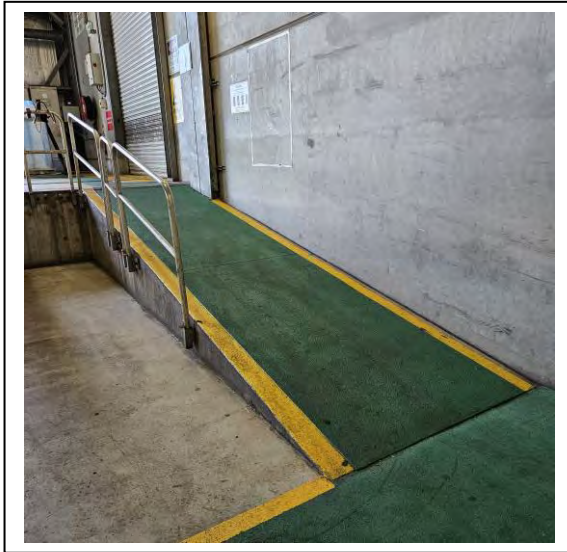




# EXPANDED RANGE OF ANTI-SLIP PRODUCTS FROM THE STAIRCARE – PROGRIT SPG™ RANGE

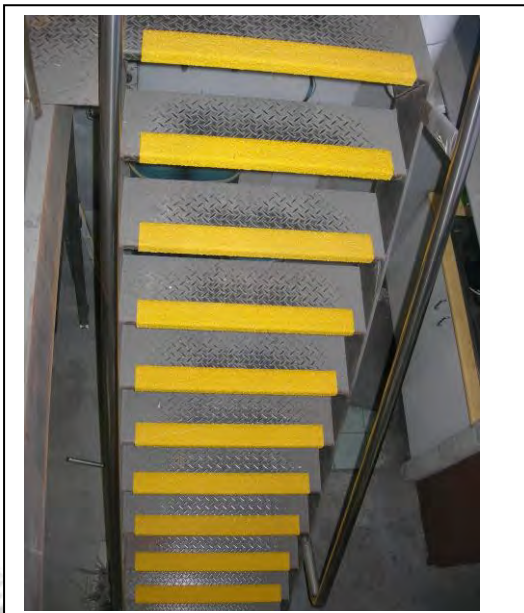
## SPG FRP Anti Slip Plates

Staircare's SPG Anti-Slip Plates feature a durable FRP base embedded with heavy-duty silicon carbide grit, achieving Class P5 (Wet Pendulum Test) and R12 (Oil-Wet Inclining Platform Test) ratings. At approximately 4mm thick, each plate is made to measure and can be supplied in standard safety yellow or custom colours. Options include rig identification, safety messaging, or branding for enhanced site compliance and visibility.



## SPG Anti-Slip Stair Tread Protection

Engineered for high-risk access areas, SPG Stair Tread Plates and Nosings incorporate the same industrial-grade anti-slip grit as our base plates. Designed for installation on checker plate or grated stair surfaces, these solutions provide reliable slip resistance in mining, marine, and offshore environments, ensuring worker safety in all conditions.





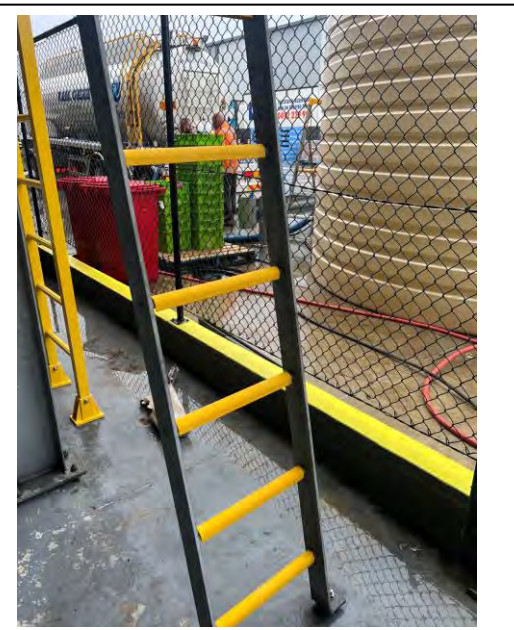
## SPG FRP Trench Covers & Grated Plates

SPG supplies custom-designed FRP Solid Top Covers and Grated Plates fabricated in consultation with each client's specific site requirements. SPG Grated Plates are fitted with heavy-duty grit achieving R13 slip resistance (Oil-Wet Inclining Platform Test – AS 4586:2013), offering superior safety performance across trenching, service pit, and access areas.



## SPG Ladder Rung & Pipe Covers

SPG Ladder Rung Covers and custom half-round Pipe Covers provide enhanced safety for personnel crossing pipeline systems. Manufactured from corrosion-resistant FRP with offshore-grade anti-slip grit and UV stabilisation, these components are designed for demanding industrial environments, offering long-lasting traction and visibility.



# RIG FLOOR ANTISLIP SAFETY FLOOR MAT



**STAIRCARE PROGRIT**  
ANTI SLIP FOR INDUSTRIES

**Staircare Australia Pty Ltd**



Unit 2/84 Old Pittwater Road, Brookvale NSW 2100



+61 (2) 9939 4497 Email: [info@staircare.com.au](mailto:info@staircare.com.au)

