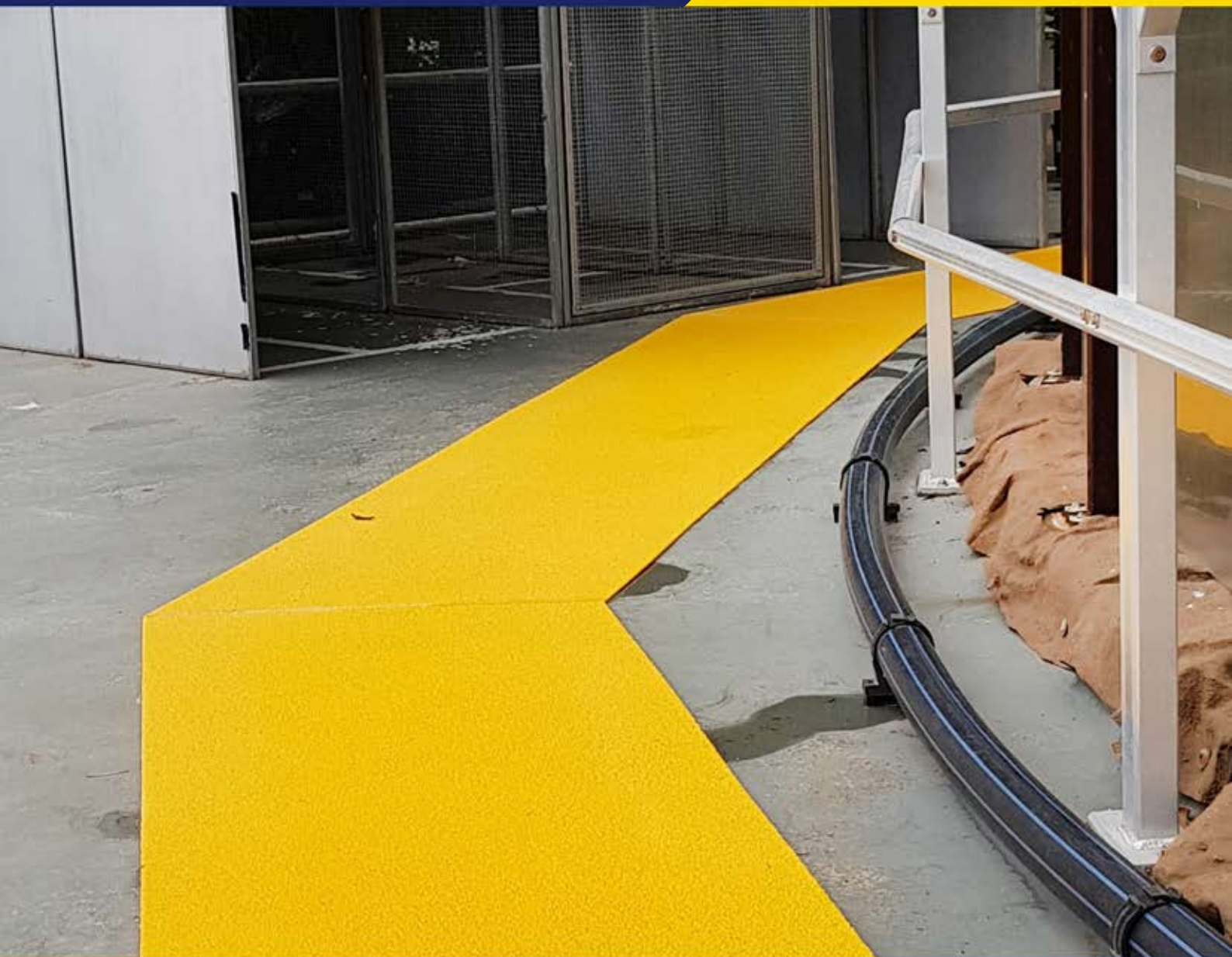




STAIRCARE PROGRIT
ANTI SLIP FOR INDUSTRIES

STAIRCARE-PROGRIT PRESENTS ANTI-SLIP PLATES

Tailor Made Anti-Slip Safety
For Industries since 2004





ENHANCE SAFETY WITH PREMIUM ANTI-SLIP SOLUTIONS

At Staircare-Progrit, we are committed to providing innovative and reliable safety solutions for both indoor and outdoor environments. Our Anti-Slip Plates are designed to offer superior traction, durability, and corrosion resistance, making them the ideal choice for a wide range of applications across Industries.



WHY CHOOSE STAIRCARE-PROGRIT ANTI-SLIP PLATES?



► UNMATCHED SAFETY

Our Anti-Slip Plates are engineered to provide the highest level of slip resistance, even in the most challenging conditions. Tested in accordance with AS 4586-2013, our plates achieve an extremely low slip risk classification, ensuring safety in wet, oily, and greasy environments.



► DURABILITY & LONGEVITY

Made from high-quality FRP (Fiber Reinforced Plastic), our Anti-Slip Plates are built to last. They are resistant to corrosion, UV rays, and extreme weather conditions, making them suitable for both indoor and outdoor use.



► LIGHTWEIGHT & EASY TO INSTALL

Weighing only 1/3 the weight of steel, our Anti-Slip Plates are easy to handle and install. They can be quickly cut to size on-site without the need for hot work permits, reducing installation time and labor costs.



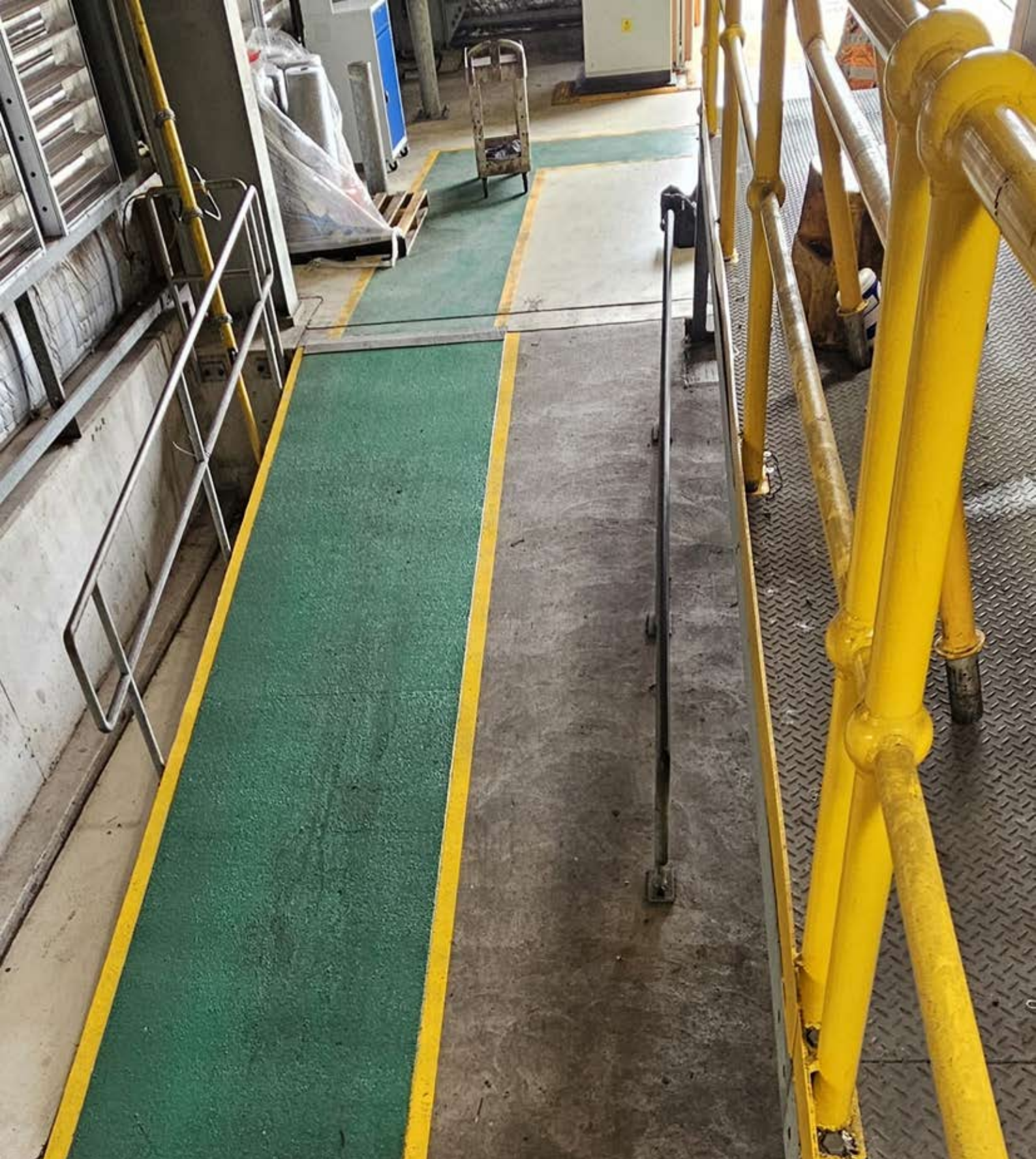
► CUSTOMIZABLE OPTIONS

We offer a range of standard and heavy-duty options to suit your specific needs. Whether you require plates for high-traffic areas or specialized environments, we have the perfect solution. Custom colors and sizes are also available to match your design requirements.



► FIRE RESISTANT & NON-CONDUCTIVE

Our Anti-Slip Plates meet in accordance with AS 1530.3 and ASTM E84-18b fire resistance standards, making them safe for use in high-risk areas. Additionally, they are non-conductive, making them ideal for use around electrical equipment and in electro-static sensitive environments.





APPLICATIONS

Our Anti-Slip Plates are versatile and can be used in a variety of settings, including:

- ▶ Walkways & Gangways
- ▶ Access Ramps & Platforms
- ▶ Industrial Floors & Warehouses
- ▶ Bridges & Piers
- ▶ Landing Areas & Pontoons
- ▶ Stair Treads & Decking

PRODUCT FEATURES

- ▶ **Material:**
High-quality FRP (Fiber Reinforced Plastic)
- ▶ **Thickness:**
4mm (Standard Duty) or 10mm (Heavy Duty)
- ▶ **Slip Resistance:**
Tested to AS 4586-2013, achieving extremely low slip risk (Class P5)
- ▶ **Fire Rating:**
AS/ISO 9239.1:2003 and ASTM E84-18b
- ▶ **Weight:**
Lightweight, only 1/3 the weight of steel
- ▶ **Colors:**
Available in Yellow or Black with custom color options available
- ▶ **Sizes:**
Customizable sizes to fit your specific requirements

AVAILABLE STANDARD SIZES

(4 AND 10 MM THICKNESS)

- ▶ SPG-PL-S-1220×600mm
- ▶ SPG-PL-S-1220×800mm
- ▶ SPG-PL-S-1220×1220mm
- ▶ SPG-PL-S-1220×2440mm

AVAILABLE HEAVY-DUTY SIZES

(4 AND 10 MM THICKNESS)

- ▶ SPG-PL-HD-1220×300mm
- ▶ SPG-PL-HD-1220×600mm
- ▶ SPG-PL-HD-1220×800mm
- ▶ SPG-PL-HD-1220×1220mm

CUSTOM SIZES

We also offer custom sizes to meet your specific project requirements.

Contact us for more information.



AVAILABLE COLORS

Our Anti-Slip Plates are available in standard black grit and heavy-duty yellow grit.

Custom colors are also available upon request.

We can match any BS or RAL color to suit your design needs.

INSTALLATION & MAINTENANCE

Installation

SPG Anti-Slip Plates can be installed using mechanical fixings or adhesive bonding, or a combination of both for added security. We recommend using SikaFlex adhesive sealant for optimal bonding and durability. Installation is quick and easy, with no need for specialized tools or hot work permits.

Maintenance

Maintaining your Anti-Slip Plates is simple. Regular cleaning with a stiff brush and mild detergent will keep them in top condition. For more stubborn dirt, a low-pressure wash can be used. Routine inspections are recommended to ensure the integrity of the plates and fixings, especially in high-traffic areas.



SLIP RESISTANCE TEST RESULTS

Slip Resistance Classification of New Pedestrian Surface Materials
AS 4586:2013 (Wet Pendulum Test)

Reported SRV of Sample: 68

Class: P5

KEY

Slip Resistance Classification Based on Wet Pendulum Test (AS 4586:2013)

Class	BPN Range	Description
P0	Less than 12	Very slippery and hazardous surface under wet conditions.
P1	12 to 24	Slippery surface, suitable for areas requiring low slip resistance.
P2	25 to 34	Relatively safe surface, but may be slippery under certain conditions.
P3	35 to 44	Safe surface for most conditions, but caution may be needed in very wet conditions.
P4	45 to 54	Very safe surface, suitable for areas with a high risk of slipping.
P5	55 and above	Extremely safe surface, ideal for high-risk areas such as pools or industrial kitchens.

Slip Resistance Classification of New Pedestrian Surface Materials
AS 4586:2013 (Dry Floor Friction Test)

Individual measurements	#1	#2	#3	#4	#5	#6	#7	#8
Run 1	0.85	0.98	1.11	0.82	0.93	0.93	0.92	0.91
Run 2	1.01	0.93	0.93	0.90	0.93	0.98	0.93	0.76

Cumulative run length 800 mm each	Run 1	Run 2
Average Coefficient of Friction (COF)	0.93	0.92

Reported SRV of Sample: 0.95 (Rounded to the nearest 0.05)

Class: D1

KEY

DRY TEST RESULTS INTERPRETATION GUIDE (AUSTRALIAN STANDARD)

Classification Result	Test Result Mean Value (COF)	Notional contribution of the floor surface to the risk of slipping when dry
D1	≥ 0.40	Low to Moderate
D0	< 0.40	High to Very High

FIRE TESTING

Test on composite floor grate in accordance with AS ISO 9239.1 - 2003

Here is a summary of the three tables combined into one table:

Parameter	Sample 1	Sample 2	Sample 3	Average	Standard Deviation
Flame Front Travel Time (s)					
50 mm	318	340	380	346	31.11
100 mm	n/a	720	n/a	720	n/a
HFX Values					
10 min Distance (mm)	40	80	40	53	23.1
10 min Radiant Flux (kW/m ²)	10.6	10.8	10.6	11	0.1
20 min Distance (mm)	n/a	70	n/a	70	0.0
20 min Radiant Flux (kW/m ²)	n/a	10.8	n/a	11	0.0
Critical Heat Flux/HF-30					
Max Observation Duration (s)	1046	1416	947	1136.3	247.21
Flame Spread Distance (mm)	70	100	60	80	20.82
CRF (kW/m ²)	11.0	11.0	11.0	≥ 11.0	0.00
Integral Light Attenuation (%-min)	23	98	6	43	49

NOTES

► Flame Front Travel Time:

Only the 50 mm and 100 mm distances are provided, as other distances did not show flame spread.

► HFX Values:

The 30-minute values were not applicable (n/a) for all samples.

► Critical Heat Flux/HF-30:

The CRF (Critical Radiant Flux) value is consistently ≥ 11.0 kW/m² for all samples.

► Standard Deviation:

Calculated where applicable, otherwise marked as n/a.



WHY STAIRCARE-PROGRIT?

As a trusted name in safety solutions across Australia, Staircare-Progrit is dedicated to delivering products that meet the highest standards of quality and performance. Our Anti-Slip Plates are manufactured using ISO 9001 accredited processes, ensuring that every product we deliver is of the highest quality.

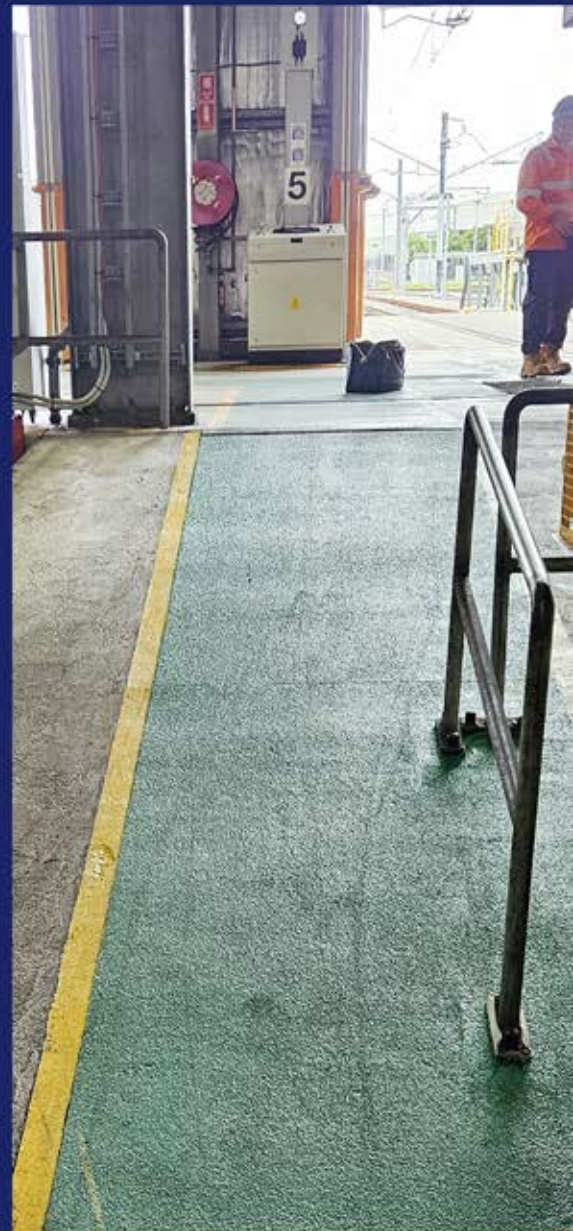


SAFETY IS OUR PRIORITY. LET STAIRCARE-PROGRIT HELP YOU CREATE A SAFER ENVIRONMENT WITH OUR PREMIUM ANTI-SLIP PLATES.

Ready to enhance safety in your environment? Contact Staircare-Progrit today to learn more about our Anti-Slip Plates and how they can benefit your project. Our team is here to provide expert advice, customized solutions, and friendly customer service.

STAIRCARE-PROGRIT PRESENTS ANTI-SLIP PLATES

Choose Staircare-ProGrit for reliable durable, and innovative safety and access solutions tailored to your needs.



STAIRCARE PROGRIT
ANTI SLIP FOR INDUSTRIES

A Division of Staircare Australia Pty Ltd

📍 2/84 Old Pittwater Road, Brookvale NSW 2100, Australia

☎ +61 (2) 9939 4497 🌐 www.staircare-progrit.com.au

✉ info@staircare.com.au